

CATALOGUE NO. 8635.2

EMBARGOED UNTIL 11.30 A.M. 21 MARCH 1994

**TOURIST ACCOMMODATION, VICTORIA,  
DECEMBER QUARTER 1993**

\*\*\*\*\*

**MAIN FEATURES**

DECEMBER QUARTER 1993  
COMPARED WITH  
DECEMBER QUARTER 1992

**HOTELS, MOTELS AND GUEST HOUSES**

- Rooms available increased by 0.9 per cent from 29,995 to 30,265 and bed spaces increased by 1.0 per cent to 83,232.
- Room nights occupied increased by 3.3 per cent to 1,324,423 and the room occupancy rate increased from 46.6 per cent to 47.6 per cent.
- By star grading, the highest room occupancy rate at 67.7 per cent was achieved by five star rated establishments compared with rates of 63.3 per cent for four star establishments and 47.3 per cent for three star establishments.
- Guest nights increased by 3.0 per cent to 2,212,143 and the bed occupancy rate increased from 28.4 per cent to 28.9 per cent.
- Guest arrivals at hotels, motels and guest houses increased by 2.7 per cent to 1,227,592 and the average length of stay remained unchanged at 1.8 days.
- Takings from accommodation increased by 3.8 per cent from \$106.5m to \$110.5m. Average takings per room night occupied remained unchanged at \$83.

**HOLIDAY FLATS, UNITS AND HOUSES**

- The number of units, etc. available for short-term letting increased by 0.9 per cent from 3,316 to 3,346 while unit nights occupied increased by 1.3 per cent to 118,807.
- The unit occupancy rate consequently increased from 38.5 per cent to 38.9 per cent.
- Unit lettings increased by 6.4 per cent to 31,974 while the average length of stay decreased from 3.9 days to 3.7 days.
- Accommodation takings increased by 0.9 per cent from \$8.8m to \$8.9m while the average takings per unit night occupied remained unchanged at \$75.

**CARAVAN PARKS (SHORT-TERM AND LONG-TERM)**

- Capacity available increased by 1.7 per cent from 66,086 to 67,177 sites and cabins, etc. while accommodation takings increased by 5.1 per cent from \$18.2m to \$19.1m.
- The site occupancy rate decreased marginally from 39.9 per cent to 39.8 per cent.
- Of the total December quarter 1993 capacity available, 6,491 sites, etc. (9.7 per cent) were occupied by long-term guests, 14,830 sites (22.1 per cent) were permanently reserved but only casually occupied by their tenants and an average of 5,307 sites (7.9 per cent) were occupied by other short-term guests.

**VISITOR HOSTELS**

- There were 2,576 bed spaces available in December quarter 1993 and 92,719 guest nights were sold.
- The bed occupancy rate increased from 36.9 per cent to 39.1 per cent.
- Accommodation takings were \$1.14m at an average of \$12 per guest night.

\*\*\*\*\*

**NOTE**

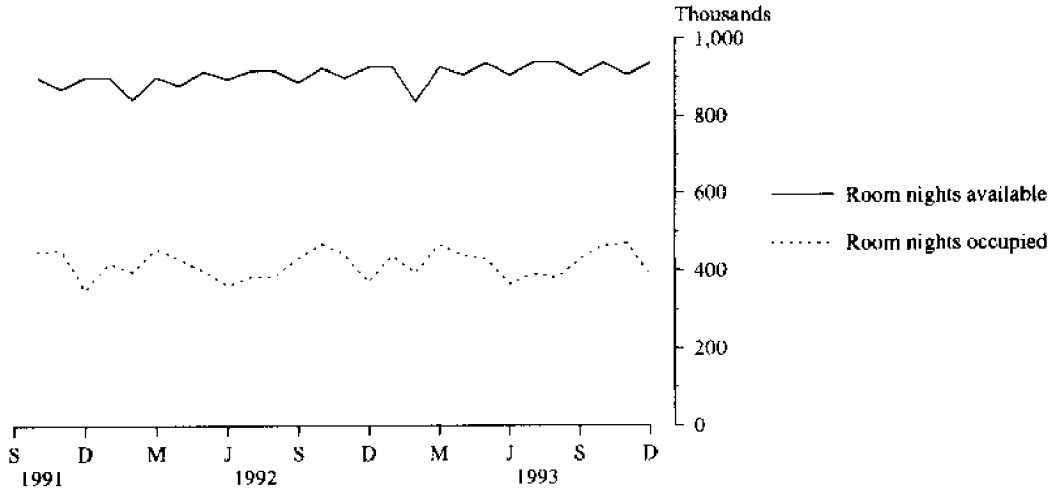
From December quarter 1993, hotel, motel and guest house establishments with less than five rooms have been formally excluded from the scope of this statistical collection. This change in scope resulted in the exclusion of 23 establishments which in the September quarter 1993 Survey aggregates for Victoria represented 2.2 per cent of hotel, motel and guest house establishments but accounted for only 0.2 per cent of accommodation capacity and less than 0.1 per cent of occupancy and takings.

\*\*\*\*\*

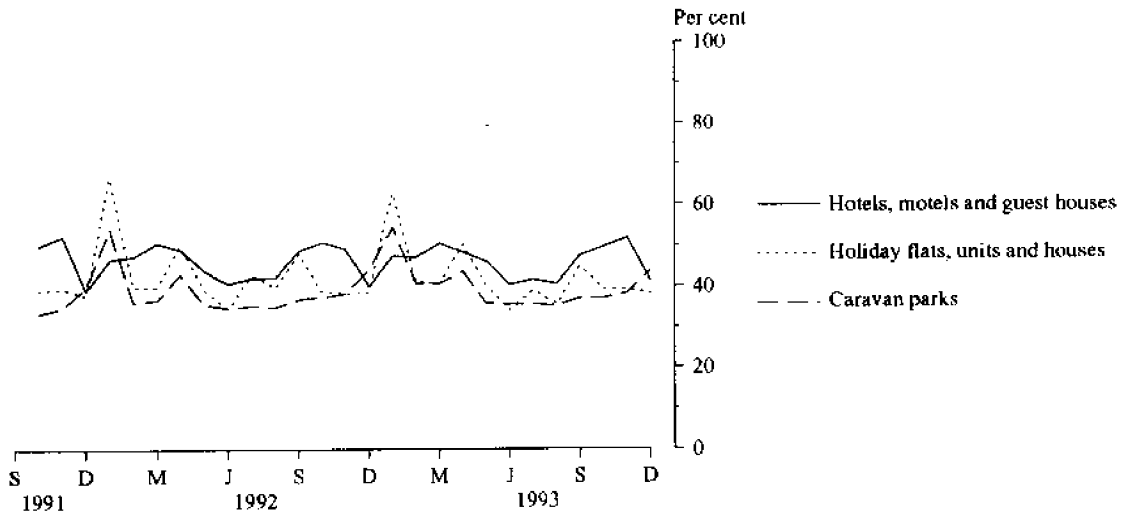
**INQUIRIES**

- *for further information about statistics in this publication and the availability of related unpublished statistics, contact Sally Barrett on 008 077285 or any ABS office.*
  - *for information about other ABS statistics and services, refer to the back page of this publication.*
- \*\*\*\*\*

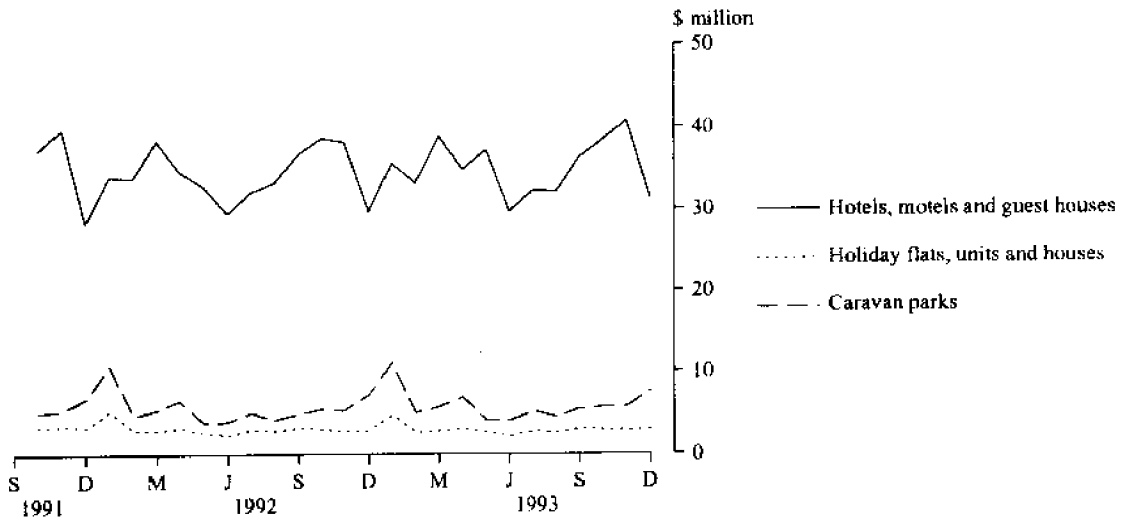
**MONTHLY ROOM NIGHTS AVAILABLE AND OCCUPIED:  
HOTELS, MOTELS AND GUEST HOUSES,  
VICTORIA**



**MONTHLY OCCUPANCY RATES,  
VICTORIA**



**MONTHLY TAKINGS FROM ACCOMMODATION,  
VICTORIA**



## CONTENTS

<i>Table</i>		<i>Page</i>
-	Main features	1
-	Diagrams	2
1	Summary of hotels, motels and guest houses with facilities, Victoria	4
2	Summary of caravan parks, Victoria	5
3	Summary of holiday flats, units and houses, Victoria	6
4	Summary of visitor hostels, Victoria	6
5	Hotels, motels and guest houses with facilities by star grading, Melbourne City, Melbourne Statistical Division and Victoria	7
6	Hotels, motels and guest houses with facilities by statistical division, Victoria	9
7	Hotels, motels and guest houses with facilities: Statistical divisions and selected statistical local areas, Victoria	12
8	Holiday flats, units and houses by statistical division, Victoria	16
9	Caravan parks: Statistical divisions and selected statistical local areas, Victoria	18
10	Caravan parks by statistical division, Victoria	22
11	Visitor hostels by statistical division, Victoria	25
-	Explanatory Notes	26
-	Maps	30

TABLE 1 — SUMMARY OF HOTELS, MOTELS AND GUEST HOUSES WITH FACILITIES, VICTORIA (a)

Particulars	Unit	Quarter ended				Year ended			
		September 1992	December 1992	March 1993	June 1993	September 1993	December 1993	December 1992	December 1993
<b>LICENSED HOTELS WITH FACILITIES</b>									
Establishments	No.	209	210	210	215	212	199	..	..
Guest rooms	No.	9,281	9,637	9,619	9,815	9,934	10,279	..	..
Bed spaces	No.	22,535	22,990	22,907	23,615	23,764	24,793	..	..
Employment (persons)	No.	8,881	9,407	9,603	9,269	9,138	9,699	..	..
Room nights occupied	'000	403.6	443.1	451.0	424.1	428.5	532.1	1,667.5	1,835.7
Room occupancy rate	per cent	47.3	50.2	52.1	47.5	47.0	56.3	49.1	50.8
Guest nights	'000	652.3	692.0	713.8	650.2	654.6	827.6	2,632.3	2,846.2
Bed occupancy rate	per cent	31.5	32.9	34.6	30.3	30.0	36.3	32.1	32.8
Guest arrivals	'000	302.0	341.0	317.5	318.5	314.2	393.2	1,239.6	1,343.3
Average length of stay	days	2.2	2.0	2.2	2.0	2.1	2.1	2.1	2.1
Takings from accommodation	\$'000	45,171	50,080	50,070	47,190	46,741	58,112	188,899	202,113
<b>MOTELS AND GUEST HOUSES WITH FACILITIES</b>									
Establishments	No.	822	829	830	836	831	826	..	..
Guest rooms	No.	20,314	20,358	20,325	20,463	20,382	19,986	..	..
Bed spaces	No.	59,346	59,452	59,376	59,979	59,806	58,439	..	..
Employment (persons)	No.	7,020	7,117	7,270	6,839	6,825	6,501	..	..
Room nights occupied	'000	798.9	838.7	851.0	811.1	774.9	792.3	3,282.6	3,229.3
Room occupancy rate	per cent	42.8	44.9	46.6	43.6	41.4	43.1	44.3	43.7
Guest nights	'000	1,406.7	1,456.2	1,523.7	1,403.4	1,352.3	1,384.6	5,752.1	5,664.0
Bed occupancy rate	per cent	25.8	26.7	28.5	25.7	24.6	25.8	26.6	26.2
Guest arrivals	'000	799.2	854.2	871.4	813.0	791.9	834.4	3,332.4	3,310.7
Average length of stay	days	1.8	1.7	1.7	1.7	1.7	1.7	1.7	1.7
Takings from accommodation	\$'000	56,795	56,418	57,563	54,567	53,895	52,390	222,415	218,415
<b>TOTAL HOTELS, MOTELS AND GUEST HOUSES WITH FACILITIES</b>									
Establishments	No.	1,031	1,039	1,040	1,051	1,043	1,025	..	..
Guest rooms	No.	29,595	29,995	29,944	30,278	30,316	30,265	..	..
Bed spaces	No.	81,881	82,442	82,283	83,594	83,570	83,232	..	..
Employment (persons)	No.	15,901	16,524	16,873	16,108	15,963	16,200	..	..
Room nights occupied	'000	1,202.5	1,281.8	1,302.0	1,235.2	1,203.4	1,324.4	4,950.0	5,065.0
Room occupancy rate	per cent	44.2	46.6	48.3	44.9	43.2	47.6	45.8	46.0
Guest nights	'000	2,059.0	2,148.2	2,237.6	2,053.6	2,006.8	2,212.1	8,384.4	8,510.2
Bed occupancy rate	per cent	27.3	28.4	30.2	27.0	26.2	28.9	28.1	28.1
Guest arrivals	'000	1,101.2	1,195.2	1,188.9	1,131.5	1,106.0	1,227.6	4,572.0	4,654.0
Average length of stay	days	1.9	1.8	1.9	1.8	1.8	1.8	1.8	1.8
Takings from accommodation	\$'000	101,967	106,498	107,633	101,757	100,636	110,502	411,314	420,528

(a) From December quarter 1993, establishments with fewer than 5 rooms have been formally excluded from the scope of this collection. See Explanatory Note 2 (page 26).

TABLE 2 — SUMMARY OF CARAVAN PARKS, VICTORIA

Particulars	Unit	Quarter ended				Year ended			
		September 1992	December 1992	March 1993	June 1993	September 1993	December 1993	December 1992	December 1993
<b>SHORT-TERM CARAVAN PARKS</b>									
Establishments	No.	440	442	444	445	436	442	..	..
Capacity									
On-site vans	No.	2,364	2,373	2,234	2,232	2,084	2,046	..	..
Other powered sites	No.	35,989	35,989	36,228	36,529	36,064	36,246	..	..
Unpowered sites	No.	13,218	12,970	13,313	13,349	13,104	13,064	..	..
Cabins, etc.	No.	2,083	2,150	2,160	2,241	2,170	2,245	..	..
<i>Total capacity</i>	<i>No.</i>	<i>53,654</i>	<i>53,482</i>	<i>53,935</i>	<i>54,351</i>	<i>53,422</i>	<i>53,601</i>	..	..
Sites occupied by long-term guests	No.	1,850	1,978	1,909	1,999	1,814	1,854	..	..
Other sites permanently reserved (a)	No.	13,165	13,399	14,444	14,002	13,847	14,425	..	..
Employment (persons)	No.	1,295	1,464	1,403	1,351	1,321	1,487	..	..
Site nights occupied (a)	'000	1,622.7	1,884.8	2,172.8	1,806.3	1,665.5	1,899.3	7,304.5	7,544.0
Site occupancy rate (a)	per cent	32.9	38.3	44.8	36.5	34.0	38.7	36.9	38.5
Takings from accommodation	\$'000	9,424	12,975	16,443	10,038	9,914	13,469	48,024	49,864
<b>LONG-TERM CARAVAN PARKS</b>									
Establishments	No.	152	149	151	147	157	159	..	..
Capacity									
On-site vans	No.	1,855	1,862	1,860	1,806	1,924	1,913	..	..
Other powered sites	No.	8,499	8,121	8,305	8,127	8,735	8,689	..	..
Unpowered sites	No.	1,945	1,931	1,852	1,781	2,044	2,066	..	..
Cabins, etc.	No.	652	690	753	770	881	908	..	..
<i>Total capacity</i>	<i>No.</i>	<i>12,951</i>	<i>12,604</i>	<i>12,770</i>	<i>12,484</i>	<i>13,584</i>	<i>13,576</i>	..	..
Sites occupied by long-term guests	No.	4,526	4,488	4,584	4,359	4,591	4,637	..	..
Other sites permanently reserved (a)	No.	466	477	417	436	390	405	..	..
Employment (persons)	No.	457	450	463	435	491	510	..	..
Site nights occupied (a)	'000	549.1	541.1	552.5	517.3	538.5	550.4	2,157.2	2,158.7
Site occupancy rate (a)	per cent	46.1	46.7	48.1	45.5	43.1	44.1	47.3	45.1
Takings from accommodation	\$'000	4,938	5,193	5,626	5,203	5,387	5,628	19,953	21,843
<b>TOTAL CARAVAN PARKS</b>									
Establishments	No.	592	591	595	592	593	601	..	..
Capacity									
On-site vans	No.	4,219	4,235	4,094	4,038	4,008	3,959	..	..
Other powered sites	No.	44,488	44,110	44,533	44,656	44,799	44,935	..	..
Unpowered sites	No.	15,163	14,901	15,165	15,130	15,148	15,130	..	..
Cabins, etc.	No.	2,735	2,840	2,913	3,011	3,051	3,153	..	..
<i>Total capacity</i>	<i>No.</i>	<i>66,605</i>	<i>66,086</i>	<i>66,705</i>	<i>66,835</i>	<i>67,006</i>	<i>67,177</i>	..	..
Sites occupied by long-term guests	No.	6,376	6,466	6,493	6,358	6,405	6,491	..	..
Other sites permanently reserved (a)	No.	13,631	13,876	14,861	14,438	14,237	14,830	..	..
Employment (persons)	No.	1,752	1,914	1,866	1,786	1,812	1,997	..	..
Site nights occupied (a)	'000	2,171.8	2,425.9	2,725.4	2,323.6	2,204.0	2,449.8	9,461.7	9,702.7
Site occupancy rate (a)	per cent	35.5	39.9	45.4	38.2	35.8	39.8	38.8	39.8
Takings from accommodation	\$'000	14,362	18,168	22,069	15,241	15,301	19,096	67,977	71,707

(a) See Explanatory Notes 11 and 14.

TABLE 3 — SUMMARY OF HOLIDAY FLATS, UNITS AND HOUSES, VICTORIA

Particulars	Unit	Quarter ended				Year ended			
		September 1992	December 1992	March 1993	June 1993	September 1993	December 1993	December 1992	December 1993
Letting entities	No.	179	182	186	185	184	204	..	..
Flats, units and houses									
Single bedroom	No.	989	1,006	980	964	985	1,032	..	..
Multiple bedroom	No.	1,937	2,310	2,331	2,039	2,002	2,314	..	..
Total flats, units and houses	No.	2,926	3,316	3,311	3,003	2,987	3,346	..	..
Bed spaces	No.	12,914	14,914	15,279	13,236	13,160	15,205	..	..
Employment (persons) (a)	No.	654	675	658	618	625	676	..	..
Unit nights occupied	'000	116.9	117.3	144.3	113.2	108.7	118.8	506.3	484.9
Unit occupancy rate	per cent	43.4	38.5	48.6	41.4	39.6	38.9	43.1	42.2
Unit lettings	'000	29.7	30.0	31.4	30.0	27.4	32.0	124.2	120.8
Average length of stay	days	3.9	3.9	4.6	3.8	4.0	3.7	4.1	4.0
Takings from accommodation	\$'000	9,177	8,805	10,435	8,184	8,648	8,884	37,669	36,150

(a) Employment numbers exclude real estate agents and their employees.

TABLE 4 — SUMMARY OF VISITOR HOSTELS, VICTORIA

Particulars	Unit	Quarter ended				Year ended			
		September 1992	December 1992	March 1993	June 1993	September 1993	December 1993	December 1992	December 1993
Establishments	No.	42	44	42	40	43	45	..	..
Bed spaces	No.	2,603	2,701	2,663	2,509	2,531	2,576	..	..
Employment (persons)	No.	127	146	145	137	140	150	..	..
Guest nights	'000	72.5	91.8	109.7	68.9	67.7	92.7	345.7	339.0
Bed occupancy rate	per cent	30.3	36.9	46.0	30.2	29.1	39.1	35.1	36.2
Guest arrivals	'000	24.9	32.9	39.4	27.1	26.9	36.7	123.1	130.1
Average length of stay	days	2.9	2.8	2.8	2.5	2.5	2.5	2.8	2.6
Takings from accommodation	\$'000	973	1,168	1,207	894	914	1,144	4,317	4,159

TABLE 5 — HOTELS, MOTELS AND GUEST HOUSES WITH FACILITIES BY STAR GRADING,  
MELBOURNE CITY, MELBOURNE STATISTICAL DIVISION AND VICTORIA (a)

Particulars	Melbourne City					Melbourne Statistical Division					
	Star grading					Star grading					
	Ungraded and 1	2	3	4 and 5	Total	Ungraded and 1	2	3	4	5	Total
<b>ESTABLISHMENTS, CAPACITY AND EMPLOYMENT</b>											
<i>December quarter 1992</i>											
Establishments	4	7	22	19	52	22	76	101	42	7	248
Guest rooms	635	747	2,153	4,543	8,078	818	2,122	4,679	4,815	2,413	14,847
Bed spaces	1,281	1,463	5,389	9,763	17,896	1,827	5,384	12,262	11,539	4,957	35,969
Employment (persons)	199	207	709	4,303	5,418	411	1,407	1,956	3,379	3,093	10,246
<i>December quarter 1993</i>											
Establishments	4	8	22	20	54	20	69	101	44	8	242
Guest rooms	321	979	1,960	4,869	8,129	612	2,218	4,462	5,010	2,654	14,956
Bed spaces	788	1,904	5,256	10,435	18,383	1,586	5,298	12,358	11,744	5,526	36,512
Employment (persons)	94	239	699	4,247	5,279	401	1,230	1,800	3,360	3,193	9,984
<b>ROOM NIGHTS OCCUPIED ('000)</b>											
<i>December quarter 1992</i>	18.3	38.1	108.0	264.2	428.6	24.2	83.5	231.0	270.3	133.1	742.0
<i>1993—</i>											
October	4.3	15.7	36.9	101.2	158.1	7.3	29.3	77.9	99.7	53.7	267.9
November	4.9	16.3	41.7	117.8	180.8	8.0	30.1	81.8	112.3	64.4	296.5
December	3.6	12.3	29.8	87.8	133.5	6.2	25.2	64.6	84.7	47.1	227.8
<i>December quarter 1993</i>	12.7	44.4	108.4	306.8	472.3	21.5	84.6	224.3	296.7	165.2	792.3
<b>ROOM OCCUPANCY RATES (per cent)</b>											
<i>December quarter 1992</i>	33.9	55.4	54.5	63.2	58.0	34.2	43.0	53.7	61.0	59.9	54.6
<i>1993—</i>											
October	42.8	51.8	60.7	67.1	62.7	38.7	42.7	56.3	64.2	65.3	57.8
November	50.9	55.6	70.9	80.7	74.1	43.4	45.2	61.1	74.7	80.9	66.1
December	35.9	40.7	49.1	58.2	53.0	32.8	36.6	46.7	54.5	57.2	49.1
<i>December quarter 1993</i>	43.1	49.3	60.1	68.5	63.2	38.2	41.5	54.6	64.4	67.7	57.6
<b>GUEST NIGHTS ('000)</b>											
<i>December quarter 1992</i>	26.5	61.3	184.5	405.8	678.2	36.9	139.4	376.4	413.6	199.4	1,165.8
<i>1993—</i>											
October	6.8	24.1	62.5	155.2	248.5	11.6	47.0	128.7	153.7	79.3	420.3
November	7.5	25.1	70.6	175.5	278.7	12.1	48.1	134.1	170.3	90.6	455.2
December	5.9	19.9	53.8	146.1	225.8	10.3	42.0	112.9	143.3	73.2	381.6
<i>December quarter 1993</i>	20.2	69.2	186.8	476.7	753.0	33.9	137.1	375.6	467.3	243.1	1,257.0
<b>BED OCCUPANCY RATES (per cent)</b>											
<i>December quarter 1992</i>	24.4	45.6	37.2	45.2	41.4	23.2	28.4	33.4	39.0	43.7	35.4
<i>1993—</i>											
October	27.8	40.8	38.3	48.0	43.6	23.6	28.6	33.6	42.2	46.3	37.1
November	31.8	43.9	44.8	56.1	50.5	25.4	30.3	36.2	48.3	54.7	41.6
December	24.3	33.8	33.0	45.2	39.6	20.8	25.6	29.5	39.4	42.7	33.7
<i>December quarter 1993</i>	27.9	39.5	38.6	49.7	44.5	23.3	28.1	33.0	43.2	47.8	37.4
<b>GUEST ARRIVALS ('000)</b>											
<i>December quarter 1992</i>	11.0	27.2	82.9	175.7	296.8	16.8	70.9	183.6	182.1	93.7	547.2
<i>1993—</i>											
October	4.0	9.9	27.3	64.3	105.4	6.8	24.2	63.4	65.5	38.3	198.2
November	4.6	10.2	31.4	71.2	117.4	7.5	24.7	65.3	69.4	39.9	206.8
December	3.7	8.1	26.5	65.1	103.4	6.2	22.1	58.6	64.9	35.7	187.4
<i>December quarter 1993</i>	12.3	28.2	85.1	200.6	326.1	20.5	71.0	187.3	199.7	113.9	592.4
<b>AVERAGE LENGTH OF STAY (days)</b>											
<i>December quarter 1992</i>	2.4	2.3	2.2	2.3	2.3	2.2	2.0	2.0	2.3	2.1	2.1
<i>December quarter 1993</i>	1.7	2.5	2.2	2.4	2.3	1.7	1.9	2.0	2.3	2.1	2.1
<b>TAKINGS FROM ACCOMMODATION (\$'000)</b>											
<i>December quarter 1992</i>	1,157	2,480	9,205	35,576	48,418	1,562	4,922	18,282	30,376	20,341	75,483
<i>1993—</i>											
October	260	856	2,936	13,012	17,063	465	1,607	5,927	11,045	7,874	26,917
November	288	897	3,262	15,425	19,872	498	1,658	6,244	12,512	9,814	30,726
December	206	644	2,230	10,344	13,425	393	1,351	4,779	8,815	6,515	21,852
<i>December quarter 1993</i>	754	2,397	8,428	38,781	50,361	1,356	4,617	16,949	32,372	24,203	79,496

**TABLE 5—HOTELS, MOTELS AND GUEST HOUSES WITH FACILITIES BY STAR GRADING,  
MELBOURNE CITY, MELBOURNE STATISTICAL DIVISION AND VICTORIA (a)—continued**

Particulars	Victoria						Total
	Star grading						
	1	2	3	4	5	Ungraded	
<b>ESTABLISHMENTS, CAPACITY AND EMPLOYMENT</b>							
<i>December quarter 1992—</i>							
Establishments	35	401	439	57	7	100	1,039
Guest rooms	340	7,594	11,921	5,568	2,413	2,159	29,995
Bed spaces	870	21,939	34,928	13,898	4,957	5,850	82,442
Employment (persons)	320	3,672	4,517	3,874	3,093	1,048	16,524
<i>December quarter 1993—</i>							
Establishments	23	385	456	66	8	87	1,025
Guest rooms	284	7,490	12,246	5,896	2,654	1,695	30,265
Bed spaces	725	21,258	36,303	14,564	5,526	4,856	83,232
Employment (persons)	267	3,394	4,512	3,911	3,193	923	16,200
<b>ROOM NIGHTS OCCUPIED ('000)</b>							
<i>December quarter 1992</i>	7.6	254.7	530.9	311.9	133.1	43.7	1,281.8
<i>1993—</i>							
October	1.9	85.1	193.2	116.6	53.7	15.0	465.4
November	1.7	79.6	183.5	127.8	64.4	14.4	471.5
December	1.6	71.8	155.8	99.0	47.1	12.3	387.5
<i>December quarter 1993</i>	5.2	236.5	532.5	343.4	165.2	41.7	1,324.4
<b>ROOM OCCUPANCY RATES (per cent)</b>							
<i>December quarter 1992</i>	24.1	36.5	48.4	60.9	59.9	22.7	46.6
<i>1993—</i>							
October	21.3	36.6	50.9	63.8	65.3	28.5	49.6
November	19.9	35.4	49.9	72.3	80.9	28.3	51.9
December	18.0	30.9	41.0	54.2	57.2	23.3	41.3
<i>December quarter 1993</i>	19.7	34.3	47.3	63.3	67.7	26.7	47.6
<b>GUEST NIGHTS ('000)</b>							
<i>December quarter 1992</i>	12.2	461.2	920.4	479.6	199.4	75.3	2,148.2
<i>1993—</i>							
October	2.6	151.2	335.6	181.3	79.3	26.2	776.3
November	2.3	137.1	306.3	194.3	90.6	24.8	755.5
December	2.4	133.1	283.6	166.4	73.2	21.8	680.4
<i>December quarter 1993</i>	7.3	421.4	925.5	542.0	243.1	72.8	2,212.1
<b>BED OCCUPANCY RATES (per cent)</b>							
<i>December quarter 1992</i>	15.3	22.9	28.6	37.5	43.7	14.3	28.4
<i>1993—</i>							
October	11.4	22.9	29.8	40.2	46.3	17.4	30.1
November	10.6	21.5	28.1	44.5	54.7	17.0	30.3
December	10.6	20.2	25.2	36.8	42.7	14.5	26.4
<i>December quarter 1993</i>	10.9	21.5	27.7	40.5	47.8	16.3	28.9
<b>GUEST ARRIVALS ('000)</b>							
<i>December quarter 1992</i>	8.3	283.2	554.5	223.0	93.7	32.4	1,195.2
<i>1993—</i>							
October	1.5	93.7	203.8	82.8	38.3	13.4	433.7
November	1.4	84.6	184.2	85.2	39.9	12.9	408.3
December	1.6	83.9	173.0	80.0	35.7	11.4	385.6
<i>December quarter 1993</i>	4.6	262.2	561.0	248.1	113.9	37.8	1,227.6
<b>AVERAGE LENGTH OF STAY (days)</b>							
<i>December quarter 1992</i>	1.5	1.6	1.7	2.2	2.1	2.3	1.8
<i>December quarter 1993</i>	1.6	1.6	1.6	2.2	2.1	1.9	1.8
<b>TAKINGS FROM ACCOMMODATION (\$'000)</b>							
<i>December quarter 1992</i>	306	12,963	35,943	33,898	20,341	3,047	106,498
<i>1993—</i>							
October	58	4,249	12,698	12,480	7,874	1,025	38,384
November	55	3,949	12,194	13,823	9,814	951	40,786
December	56	3,589	10,334	10,006	6,515	831	31,331
<i>December quarter 1993</i>	169	11,788	35,226	36,309	24,203	2,808	110,502

(a) From December quarter 1993, establishments with fewer than 5 rooms have been formally excluded from the scope of this collection. See Explanatory Note 2 (page 26).



TABLE 6—HOTELS, MOTELS AND GUEST HOUSES WITH FACILITIES BY STATISTICAL DIVISION,  
VICTORIA (a)

Particulars	Melbourne (SD)			Barwon (SD)			Western District (SD)			Central Highlands (SD)		
	Licensed hotels	Motels etc.	Total	Licensed hotels	Motels etc.	Total	Licensed hotels	Motels etc.	Total	Licensed hotels	Motels etc.	Total
<b>ESTABLISHMENTS, CAPACITY AND EMPLOYMENT</b>												
<i>December quarter 1992</i>												
Establishments	66	182	248	17	61	78	15	62	77	12	47	59
Guest rooms	7,137	7,710	14,847	324	1,220	1,544	231	1,082	1,313	186	952	1,138
Bed spaces	15,692	20,277	35,969	958	3,639	4,597	614	3,153	3,767	505	3,009	3,514
Employment (persons)	7,151	3,095	10,246	545	367	912	258	371	629	116	373	489
<i>December quarter 1993</i>												
Establishments	70	172	242	16	62	78	14	62	76	10	46	56
Guest rooms	7,850	7,106	14,956	380	1,257	1,637	222	1,087	1,309	178	956	1,134
Bed spaces	17,755	18,757	36,512	1,149	3,723	4,872	601	3,185	3,786	497	3,004	3,501
Employment (persons)	7,461	2,523	9,984	549	441	990	245	400	645	144	359	503
<b>ROOM NIGHTS OCCUPIED ('000)</b>												
<i>December quarter 1992</i>												
	373.3	368.7	742.0	11.2	50.2	61.4	7.7	45.9	53.6	8.5	43.5	52.0
<i>1993</i>												
October	152.2	115.7	267.9	4.4	16.5	20.9	2.5	16.0	18.5	3.3	18.7	22.0
November	177.3	119.2	296.5	4.6	15.8	20.4	2.4	14.0	16.4	2.5	14.6	17.1
December	132.0	95.8	227.8	4.7	15.8	20.6	2.1	13.5	15.6	2.2	11.2	13.4
<i>December quarter 1993</i>												
	461.5	330.8	792.3	13.8	48.2	61.9	6.9	43.6	50.5	8.0	44.4	52.4
<b>ROOM OCCUPANCY RATES (per cent)</b>												
<i>December quarter 1992</i>												
	57.2	52.1	54.6	37.7	44.9	43.4	36.1	46.3	44.5	49.5	49.7	49.6
<i>1993—</i>												
October	62.5	52.5	57.8	37.7	42.3	41.3	36.2	47.5	45.6	59.8	63.0	62.5
November	75.3	55.9	66.1	40.2	42.0	41.6	35.6	43.0	41.7	47.5	50.8	50.3
December	54.2	43.5	49.1	40.3	40.6	40.5	30.3	40.1	38.4	39.9	37.6	38.0
<i>December quarter 1993</i>												
	63.9	50.6	57.6	39.4	41.7	41.1	34.0	43.6	41.9	49.1	50.5	50.3
<b>GUEST NIGHTS ('000)</b>												
<i>December quarter 1992</i>												
	576.0	589.7	1,165.8	17.7	89.9	107.6	11.4	81.8	93.2	17.2	86.0	103.2
<i>1993—</i>												
October	232.4	187.8	420.3	6.4	28.6	35.0	3.9	29.2	33.1	7.0	37.2	44.2
November	265.1	190.1	455.2	6.5	26.5	33.0	3.5	24.1	27.6	4.4	26.1	30.5
December	216.3	165.3	381.6	6.7	29.6	36.3	3.4	26.3	29.7	4.3	21.8	26.0
<i>December quarter 1993</i>												
	713.8	543.2	1,257.0	19.6	84.7	104.2	10.7	79.7	90.4	15.7	85.0	100.7
<b>BED OCCUPANCY RATES (per cent)</b>												
<i>December quarter 1992</i>												
	40.2	31.7	35.4	20.1	26.9	25.5	20.1	28.3	27.0	37.0	31.1	31.9
<i>1993</i>												
October	42.2	32.3	37.1	17.9	24.8	23.2	20.7	29.6	28.2	45.3	39.9	40.7
November	49.8	33.8	41.6	18.8	23.7	22.6	19.5	25.3	24.3	29.7	28.9	29.0
December	39.3	28.4	33.7	18.8	25.6	24.0	18.1	26.6	25.3	27.7	23.4	24.0
<i>December quarter 1993</i>												
	43.7	31.5	37.4	18.5	24.7	23.3	19.4	27.2	26.0	34.3	30.8	31.3
<b>GUEST ARRIVALS ('000)</b>												
<i>December quarter 1992</i>												
	269.1	278.1	547.2	9.2	54.7	63.9	7.2	56.4	63.7	11.2	60.5	71.7
<i>1993—</i>												
October	106.1	92.1	198.2	3.4	19.0	22.4	2.4	20.9	23.3	4.4	25.5	29.9
November	113.3	93.4	206.8	3.2	17.3	20.5	2.1	18.0	20.1	2.9	19.1	22.1
December	104.3	83.2	187.4	3.0	19.5	22.5	2.0	18.2	20.3	3.1	16.2	19.3
<i>December quarter 1993</i>												
	323.7	268.7	592.4	9.6	55.8	65.4	6.6	57.1	63.7	10.4	60.9	71.3
<b>AVERAGE LENGTH OF STAY (days)</b>												
<i>December quarter 1992</i>												
	2.1	2.1	2.1	1.9	1.6	1.7	1.6	1.5	1.5	1.5	1.4	1.4
<i>December quarter 1993</i>												
	2.2	2.0	2.1	2.0	1.5	1.6	1.6	1.4	1.4	1.5	1.4	1.4
<b>TAKINGS FROM ACCOMMODATION (\$'000)</b>												
<i>December quarter 1992</i>												
	46,160	29,323	75,483	897	3,204	4,101	348	2,605	2,953	596	2,751	3,347
<i>1993—</i>												
October	17,965	8,953	26,917	388	1,097	1,485	117	945	1,062	266	1,199	1,464
November	21,421	9,305	30,726	381	1,031	1,412	112	816	928	187	904	1,091
December	14,672	7,181	21,852	350	1,089	1,439	110	821	931	157	709	866
<i>December quarter 1993</i>												
	54,057	25,439	79,496	1,119	3,217	4,336	338	2,583	2,921	609	2,812	3,421

TABLE 6—HOTELS, MOTELS AND GUEST HOUSES WITH FACILITIES BY STATISTICAL DIVISION,  
VICTORIA (a) -continued

Particulars	Wimmera (SD)	Mallee (SD)	Loddon-Campaspe (SD)		Goulburn (SD)			
	Total	Total	Licensed hotels	Motels etc.	Total	Licensed hotels	Motels etc.	Total
ESTABLISHMENTS, CAPACITY AND EMPLOYMENT								
<i>December quarter 1992—</i>								
Establishments	51	68	12	74	86	31	91	122
Guest rooms	857	1,590	139	1,348	1,487	622	1,710	2,332
Bed spaces	2,555	4,879	359	4,167	4,526	1,965	5,527	7,492
Employment (persons)	250	571	107	421	528	421	521	942
<i>December quarter 1993—</i>								
Establishments	50	70	11	72	83	26	93	119
Guest rooms	864	1,610	129	1,368	1,497	605	1,739	2,344
Bed spaces	2,613	4,935	331	4,243	4,574	1,868	5,423	7,291
Employment (persons)	245	567	116	428	544	372	488	860
ROOM NIGHTS OCCUPIED ('000)								
<i>December quarter 1992</i>								
	32.8	67.3	3.4	59.9	63.3	14.5	53.1	67.5
<i>1993—</i>								
October	13.2	25.1	1.2	22.8	24.0	5.3	18.1	23.4
November	11.4	20.3	1.2	20.1	21.3	4.8	17.0	21.8
December	9.3	18.0	1.0	15.3	16.4	4.2	16.4	20.7
<i>December quarter 1993</i>								
	33.9	63.4	3.4	58.2	61.6	14.3	51.5	65.8
ROOM OCCUPANCY RATES (per cent)								
<i>December quarter 1992</i>								
	41.6	46.0	26.5	48.3	46.3	25.3	33.7	31.5
<i>1993</i>								
October	49.4	50.2	29.6	53.8	51.7	28.1	33.6	32.1
November	43.8	42.0	30.4	48.9	47.3	26.6	32.5	31.0
December	34.7	36.1	25.7	36.2	35.3	22.6	30.5	28.4
<i>December quarter 1993</i>								
	42.6	42.8	28.6	46.3	44.7	25.7	32.2	30.5
GUEST NIGHTS ('000)								
<i>December quarter 1992</i>								
	60.0	120.8	5.2	111.5	116.7	23.5	96.4	119.9
<i>1993—</i>								
October	24.0	45.0	1.8	41.5	43.3	8.1	32.3	40.5
November	19.9	34.0	1.6	35.6	37.2	7.6	29.3	36.9
December	17.3	33.6	1.6	29.2	30.7	7.0	30.4	37.4
<i>December quarter 1993</i>								
	61.2	112.5	4.9	106.3	111.2	22.8	91.9	114.8
BED OCCUPANCY RATES (per cent)								
<i>December quarter 1992</i>								
	25.5	26.9	15.9	29.1	28.0	13.0	19.0	17.4
<i>1993—</i>								
October	29.7	29.4	17.1	31.6	30.5	14.1	19.2	17.9
November	25.4	22.9	15.9	28.0	27.1	13.6	18.0	16.9
December	21.3	21.9	15.4	22.2	21.7	12.2	18.1	16.5
<i>December quarter 1993</i>								
	25.5	24.8	16.1	27.2	26.4	13.3	18.4	17.1
GUEST ARRIVALS ('000)								
<i>December quarter 1992</i>								
	41.7	76.1	3.6	77.4	81.0	14.6	61.5	76.1
<i>1993—</i>								
October	16.2	28.7	1.3	27.7	29.0	5.0	19.9	24.9
November	13.6	22.3	1.4	24.9	26.3	4.6	18.6	23.2
December	12.5	21.6	1.2	20.7	21.9	4.4	18.3	22.7
<i>December quarter 1993</i>								
	42.4	72.6	3.9	73.3	77.2	13.9	56.9	70.8
AVERAGE LENGTH OF STAY (days)								
<i>December quarter 1992</i>								
	1.4	1.6	1.5	1.4	1.4	1.6	1.6	1.6
<i>December quarter 1993</i>								
	1.4	1.6	1.3	1.4	1.4	1.6	1.6	1.6
TAKINGS FROM ACCOMMODATION (\$'000)								
<i>December quarter 1992</i>								
	1,782	3,444	164	3,625	3,789	926	3,234	4,160
<i>1993—</i>								
October	743	1,270	54	1,385	1,438	323	1,082	1,405
November	630	1,051	61	1,244	1,305	276	1,021	1,298
December	525	966	56	937	994	252	1,043	1,296
<i>December quarter 1993</i>								
	1,897	3,288	171	3,566	3,737	852	3,147	3,999

TABLE 6 — HOTELS, MOTELS AND GUEST HOUSES WITH FACILITIES BY STATISTICAL DIVISION,  
VICTORIA (a)—continued

Particulars	Ovens-Murray (SD)			East Gippsland (SD)			Gippsland (SD)			Victoria		
	Licensed hotels	Motels etc.	Total	Licensed hotels	Motels etc.	Total	Licensed hotels	Motels etc.	Total	Licensed hotels	Motels etc.	Total
ESTABLISHMENTS, CAPACITY AND EMPLOYMENT												
<i>December quarter 1992—</i>												
Establishments	18	89	107	9	59	68	18	57	75	210	829	1,039
Guest rooms	369	1,845	2,214	134	1,134	1,268	259	1,146	1,405	9,637	20,358	29,995
Bed spaces	1,243	5,940	7,183	411	3,462	3,873	698	3,389	4,087	22,990	59,452	82,442
Employment (persons)	198	560	758	114	401	515	322	362	684	9,407	7,117	16,524
<i>December quarter 1993</i>												
Establishments	15	91	106	9	63	72	18	55	73	199	826	1,025
Guest rooms	290	1,852	2,142	146	1,173	1,319	259	1,194	1,453	10,279	19,986	30,265
Bed spaces	920	6,004	6,924	442	3,552	3,994	716	3,514	4,230	24,793	58,439	83,232
Employment (persons)	184	509	693	84	358	442	350	377	727	9,699	6,501	16,200
ROOM NIGHTS OCCUPIED ('000)												
<i>December quarter 1992</i>	5.3	45.0	50.4	3.6	43.3	46.8	7.3	37.3	44.5	443.1	838.7	1,281.8
<i>1993—</i>												
October	1.8	17.0	18.8	1.1	14.4	15.5	2.3	13.8	16.1	177.4	288.1	465.4
November	1.7	14.8	16.5	1.0	13.7	14.7	2.4	12.7	15.1	200.5	271.0	471.5
December	2.2	14.9	17.1	1.3	13.6	14.9	2.2	11.6	13.8	154.2	233.3	387.5
<i>December quarter 1993</i>	5.7	46.7	52.4	3.3	41.8	45.1	6.9	38.2	45.0	532.1	792.3	1,324.4
ROOM OCCUPANCY RATES (per cent)												
<i>December quarter 1992</i>	15.7	26.7	24.9	29.1	41.5	40.2	30.5	35.3	34.4	50.2	44.9	46.6
<i>1993—</i>												
October	20.0	29.6	28.3	23.8	39.7	37.9	28.4	37.3	35.7	55.7	46.5	49.6
November	19.4	26.6	25.7	22.8	39.0	37.2	31.1	35.4	34.7	65.0	45.2	51.9
December	24.2	26.0	25.7	28.0	37.5	36.5	27.3	31.5	30.7	48.4	37.6	41.3
<i>December quarter 1993</i>	21.2	27.4	26.6	24.9	38.7	37.2	28.9	34.7	33.7	56.3	43.1	47.6
GUEST NIGHTS ('000)												
<i>December quarter 1992</i>	9.1	87.4	96.5	6.9	80.0	86.8	11.4	66.2	77.7	692.0	1,436.2	2,148.2
<i>1993—</i>												
October	3.0	32.5	35.5	2.0	26.5	28.5	3.6	23.4	27.0	273.5	502.8	776.3
November	2.6	27.1	29.7	1.7	25.0	26.7	3.8	21.0	24.8	300.8	454.7	755.5
December	3.7	29.0	32.8	2.8	27.6	30.4	3.7	21.0	24.8	253.3	427.1	680.4
<i>December quarter 1993</i>	9.3	88.6	98.0	6.5	79.1	85.6	11.1	65.5	76.5	827.6	1,384.6	2,212.1
BED OCCUPANCY RATES (per cent)												
<i>December quarter 1992</i>	8.0	16.1	14.7	18.1	25.1	24.4	17.8	21.2	20.7	32.9	26.7	28.4
<i>1993—</i>												
October	10.4	17.5	16.5	14.4	24.1	23.0	16.1	21.5	20.6	35.6	27.8	30.1
November	9.6	15.0	14.3	12.9	23.5	22.3	17.5	20.0	19.5	40.4	25.9	30.3
December	13.1	15.6	15.3	20.2	25.0	24.5	16.8	19.3	18.9	33.0	23.6	26.4
<i>December quarter 1993</i>	11.0	16.0	15.4	15.9	24.2	23.3	16.8	20.3	19.7	36.3	25.8	28.9
GUEST ARRIVALS ('000)												
<i>December quarter 1992</i>	6.5	53.3	59.8	4.3	54.7	59.0	7.3	47.8	55.0	341.0	854.2	1,195.2
<i>1993—</i>												
October	2.2	19.9	22.1	1.3	18.7	20.0	2.3	16.5	18.9	131.4	302.2	433.7
November	1.8	17.2	19.0	1.2	16.6	17.8	2.3	14.4	16.6	135.0	273.3	408.3
December	2.4	17.8	20.2	1.7	18.2	19.9	2.5	14.7	17.2	126.7	258.9	385.6
<i>December quarter 1993</i>	6.5	54.8	61.3	4.1	53.5	57.7	7.1	45.6	52.7	393.2	834.4	1,227.6
AVERAGE LENGTH OF STAY (days)												
<i>December quarter 1992</i>	1.4	1.6	1.6	1.6	1.5	1.5	1.6	1.4	1.4	2.0	1.7	1.8
<i>December quarter 1993</i>	1.4	1.6	1.6	1.6	1.5	1.5	1.6	1.4	1.5	2.1	1.7	1.8
TAKINGS FROM ACCOMMODATION (\$'000)												
<i>December quarter 1992</i>	182	2,448	2,630	164	2,347	2,512	239	2,059	2,298	50,080	56,418	106,498
<i>1993</i>												
October	56	918	974	45	774	819	82	724	806	19,446	18,939	38,384
November	53	780	833	48	732	780	87	645	732	22,752	18,034	40,786
December	66	834	900	56	799	855	83	625	708	15,914	15,417	31,331
<i>December quarter 1993</i>	174	2,533	2,707	150	2,305	2,455	251	1,994	2,246	58,112	52,390	110,502

(a) From December quarter 1993, establishments with fewer than 5 rooms have been formally excluded from the scope of this collection. See Explanatory Note 2 (page 26).

TABLE 7 — HOTELS, MOTELS AND GUEST HOUSES WITH FACILITIES: STATISTICAL DIVISIONS

Statistical Divisions and selected Statistical Local Areas	Establish- ments	Guest rooms	Bed spaces	Employ- ment (persons)	Room nights occupied				Room occupancy rates (per cent)			
					Oct.	Nov.	Dec.	Dec. qtr	Oct.	Nov.	Dec.	Dec. qtr
					Box Hill (C)	3	86	221	33	1,746	1,559	1,509
Broadmeadows (C)	7	191	507	117	3,662	3,531	3,190	10,383	61.8	61.6	53.9	59.1
Cranbourne (S)	5	97	320	29	1,135	1,122	878	3,135	37.7	38.6	29.2	35.1
Croydon (C)	4	90	270	166	1,063	858	763	2,684	38.1	31.8	27.3	32.4
Doncaster & Templestowe (C)	4	91	250	100	1,297	1,204	1,255	3,756	46.0	44.1	44.5	44.9
Essendon (C)	3	100	298	33	1,860	1,612	1,237	4,709	60.0	53.7	39.9	51.2
Flinders (S)	17	294	772	220	2,991	3,118	3,191	9,300	32.8	35.4	35.0	34.4
Footscray (C)	3	114	302	16	1,968	2,025	1,566	5,559	55.7	59.2	44.3	53.0
Frankston (C)	5	228	675	97	3,082	2,900	2,840	8,822	43.6	42.4	40.2	42.1
Hastings (S)	4	84	261	59	1,180	950	868	2,998	45.3	37.7	33.3	38.8
Healesville (S)	8	86	306	57	1,072	1,075	1,130	3,277	40.2	41.7	42.4	41.4
Kew (C)	3	105	253	44	2,149	1,972	1,597	5,718	66.0	62.6	49.1	59.2
Knox (C)	3	133	363	62	1,817	1,925	1,883	5,625	44.1	48.2	45.7	46.0
Lillydale (S)	6	165	393	170	2,037	1,856	1,512	5,405	39.8	37.5	29.6	35.6
Melbourne (C) — Inner	28	5,890	12,315	4,158	115,797	133,983	99,660	349,440	63.4	75.8	54.6	64.5
— Remainder	26	2,239	6,068	1,121	42,268	46,792	33,839	122,899	60.9	69.7	48.8	59.7
Mornington (S)	5	74	206	56	861	796	955	2,612	37.5	35.9	41.6	38.4
Nunawading (C)	5	155	363	177	2,862	3,153	2,655	8,670	59.6	67.8	55.3	60.8
Oakleigh (C)	6	171	475	38	2,122	2,271	2,144	6,537	40.0	44.3	40.4	41.6
Prahran (C)	6	267	645	195	5,615	5,644	4,550	15,809	67.8	70.5	55.0	64.4
Ringwood (C)	4	89	234	135	1,530	1,399	1,203	4,132	55.5	52.4	43.6	50.5
St Kilda (C)	14	717	1,701	201	10,180	9,939	8,477	28,596	45.8	46.2	38.1	43.4
South Melbourne (C)	9	1,529	3,859	1,272	29,794	36,085	24,987	90,866	62.9	78.7	52.7	64.6
Springvale (C)	6	153	463	205	2,531	2,632	2,197	7,360	53.4	57.3	46.3	52.3
Upper Yarra (S) Pt. A	4	97	241	16	616	459	218	1,293	20.5	15.8	7.2	14.5
Waverley (C)	7	180	460	298	2,856	3,225	2,461	8,542	51.2	59.7	44.1	51.6
Wernbee (C)	5	128	384	66	1,265	1,743	1,412	4,420	31.9	45.4	35.6	37.5
Balance	42	1,403	3,907	843	22,589	22,713	19,663	64,965	51.9	54.0	45.2	50.3
Melbourne (SD)	242	14,956	36,512	9,984	267,945	296,541	227,840	792,326	57.8	66.1	49.1	57.6
Barrabool (S) Pt. B	8	140	412	50	1,217	1,271	1,637	4,125	28.0	30.3	37.7	32.0
Bellarine (RC) Pt. A and B	7	95	322	97	553	565	975	2,093	18.8	19.8	33.1	23.9
Colac (C)	5	109	318	75	1,348	1,159	1,006	3,513	39.9	35.4	29.8	35.0
Geelong (C)	10	359	985	151	5,485	4,756	4,227	14,468	49.3	44.2	38.0	43.8
Orway (S)	13	196	562	110	2,497	2,415	2,801	7,713	41.1	41.1	46.1	42.8
Queenscliffe (B)	5	102	275	86	1,205	1,184	1,134	3,523	38.1	38.7	35.9	37.5
Sth Barwon (C) Pt. A and B	11	158	496	120	2,050	1,754	1,784	5,588	41.9	37.0	36.4	38.4
Winchelsea (S)	10	296	965	228	4,203	4,875	4,861	13,939	45.8	54.9	53.0	51.2
Balance	9	182	537	73	2,377	2,454	2,148	6,979	42.1	44.9	38.1	41.7
Barwon (SD)	78	1,637	4,872	990	20,935	20,433	20,573	61,941	41.3	41.6	40.5	41.1
Camperdown (T)	3	48	133	15	607	612	830	2,049	40.8	42.5	55.8	46.4
Hamilton (C)	10	199	566	101	3,415	2,979	1,731	8,125	55.4	49.9	28.1	44.4
Hampden (S)	4	35	86	11	142	155	142	439	13.1	14.8	13.1	13.6
Heytesbury (S)	6	75	229	51	1,123	1,156	1,204	3,483	48.3	51.4	51.8	50.5
Heywood (S)	5	56	172	12	572	465	609	1,646	32.9	27.7	35.1	31.9
Port Fairy (B)	7	83	246	36	1,187	919	1,070	3,176	46.1	36.9	41.6	41.6
Portland (C)	11	257	739	153	2,585	3,068	2,819	8,472	32.4	39.8	35.4	35.8
Warrnambool (C)	23	500	1,456	238	8,405	6,676	6,802	21,883	54.2	44.5	43.9	47.6
Balance	7	56	159	28	475	363	395	1,233	27.4	21.6	22.8	23.9
Western District (SD)	76	1,309	3,786	645	18,511	16,393	15,602	50,506	45.6	41.7	38.4	41.9
Ararat (C)	6	101	316	27	1,662	1,615	1,261	4,538	53.1	53.3	40.3	48.8
Ballaarat (C)	18	540	1,716	232	12,257	9,190	6,440	27,887	73.2	56.7	38.5	56.1
Ballarat (S) Pt. A and B	5	147	493	86	2,985	2,335	1,942	7,262	65.5	52.9	42.6	53.7
Buninyong (S) Pt. A	6	90	268	22	1,357	877	850	3,084	48.6	32.5	30.5	37.2
Daylesford & Glenlyon (S)	8	129	331	79	2,215	1,845	1,637	5,697	55.4	47.7	40.9	48.0
Balance	13	127	377	57	1,504	1,239	1,225	3,968	38.2	32.5	31.1	34.0
Central Highlands (SD)	56	1,134	3,501	503	21,980	17,101	13,355	52,436	62.5	50.3	38.0	50.3
Horsham (C)	15	320	989	77	4,619	4,333	3,566	12,518	46.6	45.1	35.9	42.5
Lowan (S)	4	68	180	16	759	654	630	2,043	36.0	32.1	29.9	32.7
Stawell (C)	8	139	449	40	1,996	1,659	1,378	5,033	46.3	39.8	32.0	39.4
Stawell (S)	9	174	528	81	3,610	2,785	2,178	8,573	66.9	53.4	40.4	53.6
St Arnaud (T)	4	40	113	8	613	440	266	1,319	49.4	36.7	21.5	35.8
Warracknabeal (S)	3	35	98	7	542	367	283	1,192	50.0	35.0	26.1	37.0
Balance	7	88	256	16	1,103	1,123	987	3,213	40.4	42.5	36.2	39.7
Wimmera (SD)	50	864	2,613	245	13,242	11,361	9,288	33,891	49.4	43.8	34.7	42.6

## AND SELECTED STATISTICAL LOCAL AREAS, VICTORIA, DECEMBER QUARTER 1993

<i>Guest nights</i>				<i>Guest arrivals</i>				<i>Takings from accommodation (\$'000)</i>			
<i>Oct.</i>	<i>Nov.</i>	<i>Dec.</i>	<i>Dec. qtr</i>	<i>Oct.</i>	<i>Nov.</i>	<i>Dec.</i>	<i>Dec. qtr</i>	<i>Oct.</i>	<i>Nov.</i>	<i>Dec.</i>	<i>Dec. qtr</i>
2,686	2,378	2,341	7,405	1,701	1,721	1,689	5,111	118	107	106	331
6,662	5,589	5,610	17,861	3,882	3,532	4,194	11,608	275	263	238	776
1,663	1,554	1,249	4,466	1,033	1,026	842	2,901	61	58	51	170
1,735	1,303	1,113	4,151	998	883	661	2,542	61	49	41	151
1,748	1,594	1,707	5,049	1,080	1,058	1,035	3,173	90	83	86	259
3,764	3,401	2,511	9,676	2,075	1,739	1,486	5,300	134	122	94	350
5,473	5,498	6,293	17,264	3,801	3,924	4,347	12,072	276	295	281	852
2,940	2,982	2,342	8,264	2,732	2,791	2,157	7,680	148	154	125	426
4,746	4,437	4,339	13,522	2,643	2,718	2,616	7,977	230	205	210	645
1,956	1,593	1,568	5,117	1,074	1,010	921	3,005	77	66	53	196
2,479	2,231	2,434	7,144	1,431	1,271	1,262	3,964	65	62	55	183
3,744	3,348	2,631	9,723	1,953	1,674	1,366	4,993	218	196	156	570
2,511	2,823	2,701	8,035	988	988	799	2,775	145	157	148	450
2,951	2,769	2,370	8,090	1,961	1,805	1,650	5,416	152	140	110	403
177,902	203,293	164,905	546,100	76,424	84,116	75,655	236,195	13,024	15,363	10,368	38,754
70,624	75,359	60,870	206,853	28,953	33,264	27,735	89,952	4,040	4,509	3,057	11,607
1,346	1,257	2,181	4,784	984	929	1,119	3,032	48	52	58	158
4,322	4,649	4,341	13,312	2,773	2,828	2,617	8,218	249	258	215	722
3,297	3,602	3,697	10,596	1,609	1,739	1,673	5,021	150	169	161	480
8,329	8,314	6,901	23,544	3,530	3,628	3,170	10,328	644	655	526	1,826
2,046	2,053	1,881	5,980	1,238	1,144	1,190	3,572	102	98	81	281
17,057	15,830	14,380	47,267	8,207	7,761	6,550	22,518	711	706	568	1,985
43,365	52,461	38,275	134,101	19,812	18,636	17,157	55,605	3,468	4,417	2,936	10,821
3,321	3,426	4,121	10,868	1,496	1,799	2,110	5,405	220	232	192	644
1,175	810	394	2,379	498	411	212	1,121	35	22	11	68
3,855	4,289	4,667	12,811	2,297	2,586	2,018	6,901	264	296	213	773
2,191	3,005	2,712	7,908	1,300	1,273	1,513	4,086	73	104	80	257
36,387	35,325	33,040	104,752	21,715	20,529	19,704	61,948	1,838	1,888	1,633	5,359
#20,275	455,173	381,574	1,257,022	198,188	206,783	187,448	592,419	26,917	30,726	21,852	79,496
2,345	2,289	3,357	7,991	1,867	1,749	2,440	6,056	83	94	120	297
1,327	1,215	2,745	5,287	950	838	1,287	3,075	32	35	72	139
2,053	1,796	1,588	5,437	1,728	1,524	1,415	4,667	53	48	44	145
7,582	6,198	5,728	19,508	4,315	3,718	3,836	11,869	399	328	291	1,018
5,307	5,120	6,235	16,662	3,366	3,154	3,855	10,375	177	164	210	551
2,101	2,068	2,107	6,276	1,385	1,329	1,494	4,208	77	78	76	231
3,776	3,035	3,561	10,372	2,759	2,088	2,464	7,311	126	102	114	342
7,134	8,011	7,850	22,995	3,757	3,990	3,768	11,515	388	424	377	1,189
3,359	3,234	3,128	9,721	2,248	2,125	1,986	6,359	150	139	135	424
34,984	32,966	36,299	104,249	22,375	20,515	22,545	65,435	1,485	1,412	1,439	4,336
1,064	948	1,412	3,424	764	709	933	2,406	27	29	34	90
6,250	4,622	2,907	13,779	3,793	3,234	2,169	9,196	189	158	98	445
273	278	266	817	158	189	164	511	7	7	6	20
2,386	2,434	2,712	7,532	1,790	2,043	2,068	5,901	75	76	85	236
1,134	839	1,286	3,259	914	615	847	2,376	26	19	27	71
2,397	1,916	2,403	6,716	1,535	1,237	1,468	4,240	78	62	70	210
4,099	4,604	4,852	13,555	2,932	2,987	2,823	8,742	134	151	148	433
14,631	11,349	13,012	38,992	10,692	8,530	9,121	28,343	505	410	441	1,356
858	660	810	2,328	714	577	664	1,955	21	16	22	59
33,092	27,650	29,660	90,402	23,292	20,121	20,257	63,670	1,062	928	931	2,921
2,466	2,366	1,804	6,636	2,129	2,008	1,532	5,669	83	84	60	228
25,851	17,004	13,169	56,024	16,822	11,933	9,695	38,450	818	576	435	1,829
5,926	4,181	3,896	14,003	3,668	3,002	2,890	9,560	221	168	145	534
2,986	1,551	1,603	6,140	2,421	1,333	1,350	5,104	71	42	43	157
3,833	3,121	3,108	10,062	2,520	2,030	2,088	6,638	159	135	111	405
3,108	2,265	2,449	7,822	2,374	1,771	1,755	5,900	112	86	71	269
44,170	30,488	26,029	100,687	29,934	22,077	19,310	71,321	1,464	1,091	866	3,421
7,599	7,035	6,189	20,823	5,748	5,376	4,838	15,962	255	242	206	704
1,379	1,135	1,233	3,747	1,132	1,014	1,014	3,160	35	32	29	97
3,855	3,027	2,579	9,461	2,647	2,015	2,004	6,666	109	90	75	275
7,263	5,631	4,702	17,596	3,774	2,987	2,795	9,556	244	182	147	572
1,085	708	490	2,283	629	385	307	1,321	25	18	12	55
953	571	468	1,992	863	501	382	1,746	23	15	11	49
1,896	1,809	1,590	5,295	1,433	1,371	1,177	3,981	51	51	44	145
24,030	19,916	17,251	61,197	16,226	13,649	12,517	42,392	743	630	525	1,897

TABLE 7—HOTELS, MOTELS AND GUEST HOUSES WITH FACILITIES: STATISTICAL DIVISIONS

Statistical Divisions and selected Statistical Local Areas	Establish- ments	Guest rooms	Bed spaces	Employ- ment (persons)	Room nights occupied			Room occupancy rates (per cent)				
					Oct.	Nov.	Dec.	Dec. qtr	Oct.	Nov.	Dec.	Dec. qtr
Kerang (B)	3	52	154	7	663	593	526	1,782	41.1	38.0	32.6	37.2
Mildura (C)	33	938	2,876	324	16,005	12,569	10,981	39,555	55.0	44.7	37.8	45.8
Mildura (S) Pt. A and B	5	74	209	31	938	584	637	2,159	40.9	26.3	27.8	31.7
Swan Hill (C)	15	358	1,105	145	5,261	4,680	4,082	14,023	47.4	43.6	36.8	42.6
Swan Hill (S)	6	89	290	29	1,037	751	763	2,551	37.6	28.1	27.7	31.2
Balance	8	99	301	31	1,154	1,122	1,005	3,281	37.6	37.8	32.7	36.0
<i>Mallee (SD)</i>	<i>70</i>	<i>1,610</i>	<i>4,935</i>	<i>567</i>	<i>25,058</i>	<i>20,299</i>	<i>17,994</i>	<i>63,351</i>	<i>50.2</i>	<i>42.0</i>	<i>36.1</i>	<i>42.8</i>
Bendigo (C)	25	535	1,649	188	9,733	8,810	5,890	24,433	58.7	54.9	35.5	49.6
Castlemaine (C)	3	48	145	13	690	694	534	1,918	46.4	48.2	35.9	43.4
Echuca (C)	19	411	1,268	147	6,820	5,829	5,356	18,005	53.5	47.3	42.0	47.6
Kyneton (S)	3	26	70	10	380	416	351	1,147	47.1	53.3	43.5	48.0
Marong (RC) Pt. A and B	4	55	171	21	810	695	544	2,049	47.5	42.1	31.9	40.5
Maryborough (C)	7	80	222	31	1,015	1,010	784	2,809	40.9	42.1	31.6	38.2
Balance	22	342	1,049	134	4,558	3,798	2,912	11,268	43.0	37.0	27.5	35.8
<i>Loddon-Campaspe (SD)</i>	<i>83</i>	<i>1,497</i>	<i>4,574</i>	<i>544</i>	<i>24,006</i>	<i>21,252</i>	<i>16,371</i>	<i>61,629</i>	<i>51.7</i>	<i>47.3</i>	<i>35.3</i>	<i>44.7</i>
Alexandra (S)	23	561	1,553	261	4,735	3,822	4,136	12,693	27.2	22.7	23.8	24.6
Benalla (C)	9	152	466	26	2,528	2,253	1,883	6,664	53.7	49.4	40.0	47.7
Cobram (S)	5	79	231	21	751	842	810	2,403	30.7	35.5	33.1	33.1
Euroa (S)	3	41	114	10	538	476	478	1,492	42.3	38.7	37.6	39.6
Goulburn (S)	5	56	197	12	480	538	470	1,488	27.6	32.0	27.1	28.9
Mansfield (S) (a)	25	565	2,097	164	2,433	2,303	2,516	7,252	13.9	13.6	14.4	14.0
Numurkah (S)	3	39	120	5	462	440	423	1,325	38.2	37.6	35.0	36.9
Rodney (S) Pt. A and B	4	47	146	30	721	765	849	2,335	49.5	54.3	58.3	54.0
Seymour (S)	6	107	344	52	1,846	1,757	1,586	5,189	55.7	54.7	47.8	52.7
Shepparton (C)	17	477	1,402	182	6,670	6,143	5,461	18,274	45.1	42.9	36.9	41.6
Balance	19	220	621	97	2,197	2,438	2,045	6,680	32.2	36.9	30.0	33.0
<i>Goulburn (SD)</i>	<i>119</i>	<i>2,344</i>	<i>7,291</i>	<i>860</i>	<i>23,361</i>	<i>21,777</i>	<i>20,657</i>	<i>65,795</i>	<i>32.1</i>	<i>31.0</i>	<i>28.4</i>	<i>30.5</i>
Beechworth (S)	6	86	250	32	1,352	1,278	1,104	3,734	50.7	49.5	41.4	47.2
Bright (S) (a)	50	1,108	3,813	380	5,187	4,359	5,961	15,507	15.1	13.1	17.4	15.2
Rutherglen (S)	6	67	198	13	838	758	644	2,240	40.3	37.7	31.0	36.3
Upper Murray (S)	4	52	152	25	445	451	446	1,342	27.6	28.9	27.7	28.1
Wangaratta (C)	14	317	926	128	4,833	4,159	3,468	12,460	49.2	43.7	35.3	42.7
Wodonga (RC)	11	223	722	48	3,685	2,950	3,026	9,661	53.3	44.1	43.8	47.1
Yarrawonga (S)	7	147	433	38	1,289	1,259	1,304	3,852	28.3	28.5	28.6	28.5
Balance	8	142	430	29	1,177	1,279	1,134	3,590	26.7	30.0	25.8	27.5
<i>Ovens-Murray (SD)</i>	<i>106</i>	<i>2,142</i>	<i>6,924</i>	<i>693</i>	<i>18,806</i>	<i>16,493</i>	<i>17,087</i>	<i>52,386</i>	<i>28.3</i>	<i>25.7</i>	<i>25.7</i>	<i>26.6</i>
Bairnsdale (C)	12	230	632	90	2,997	2,913	2,907	8,817	42.0	42.2	40.8	41.7
Maffra (S)	3	34	94	15	294	344	357	995	27.9	33.7	33.9	31.8
Orbost (S)	13	179	569	58	2,270	1,910	2,286	6,466	40.9	35.6	41.2	39.3
Sale (C)	8	253	731	89	3,170	3,178	2,414	8,762	40.4	41.9	30.8	37.6
Tambo (S) Pt. A and B	29	537	1,659	173	6,149	5,766	6,219	18,134	36.9	35.8	37.4	36.7
Balance	7	86	309	17	619	601	723	1,943	23.2	23.3	27.1	24.6
<i>East Gippsland (SD)</i>	<i>72</i>	<i>1,319</i>	<i>3,994</i>	<i>442</i>	<i>15,499</i>	<i>14,712</i>	<i>14,906</i>	<i>45,117</i>	<i>37.9</i>	<i>37.2</i>	<i>36.5</i>	<i>37.2</i>
Alberton (S)	5	76	220	22	746	796	560	2,102	31.7	34.9	23.8	30.1
Bass (S)	4	37	108	27	340	358	413	1,111	29.6	32.3	36.0	32.6
Morwell (C) Pt. A	11	245	711	163	3,148	2,853	2,152	8,153	41.4	38.8	28.3	36.2
Phillip Island (S)	12	284	966	201	3,967	3,366	3,593	10,926	45.1	39.5	40.8	41.8
Rosedale (S)	6	126	307	24	665	673	582	1,920	17.0	17.8	14.9	16.6
South Gippsland (S)	6	92	278	50	823	853	919	2,595	28.9	30.9	32.2	30.7
Traralgon (C)	10	224	596	91	2,879	2,797	2,531	8,207	41.5	41.6	36.4	39.8
Warragul (RC)	4	55	145	47	728	652	616	1,996	42.7	39.5	36.1	39.4
Woorayl (S)	3	51	132	11	745	785	555	2,085	47.1	51.3	35.1	44.4
Balance	12	263	767	91	2,059	1,976	1,915	5,950	25.3	25.0	23.5	24.6
<i>Gippsland (SD)</i>	<i>73</i>	<i>1,453</i>	<i>4,230</i>	<i>727</i>	<i>16,100</i>	<i>15,109</i>	<i>13,836</i>	<i>45,045</i>	<i>35.7</i>	<i>34.7</i>	<i>30.7</i>	<i>33.7</i>
<i>Total Victoria</i>	<i>1,025</i>	<i>30,265</i>	<i>83,232</i>	<i>16,200</i>	<i>465,443</i>	<i>471,471</i>	<i>387,509</i>	<i>1,324,423</i>	<i>49.6</i>	<i>51.9</i>	<i>41.3</i>	<i>47.6</i>

(a) Snow field resorts are included continuously as capacity (potentially) available irrespective of any off season closures. The average occupancy rates of establishments in Bright (S) and Mansfield (S) actually remaining open during the snow fields off season, therefore, are significantly higher than the overall rates published.

## AND SELECTED STATISTICAL LOCAL AREAS, VICTORIA, DECEMBER QUARTER 1993- continued

<i>Guest nights</i>				<i>Guest arrivals</i>				<i>Takings from accommodation (\$'000)</i>			
<i>Oct.</i>	<i>Nov.</i>	<i>Dec.</i>	<i>Dec. qtr</i>	<i>Oct.</i>	<i>Nov.</i>	<i>Dec.</i>	<i>Dec. qtr</i>	<i>Oct.</i>	<i>Nov.</i>	<i>Dec.</i>	<i>Dec. qtr</i>
1,007	876	943	2,826	931	778	778	2,487	33	30	28	91
29,199	21,229	20,925	71,353	17,394	13,038	12,481	42,913	818	653	596	2,067
1,748	922	1,208	3,878	960	576	680	2,216	37	25	24	86
9,547	7,942	7,375	24,864	6,761	5,678	5,181	17,620	290	270	243	803
1,633	1,446	1,459	4,538	1,212	880	1,044	3,136	43	29	29	100
1,845	1,546	1,668	5,059	1,426	1,348	1,444	4,218	50	45	46	140
44,979	33,961	33,578	112,518	28,684	22,298	21,608	72,590	1,270	1,051	966	3,288
17,023	15,140	10,923	43,086	11,921	10,837	8,073	30,831	612	563	373	1,548
1,365	1,318	829	3,512	942	954	632	2,528	44	43	34	121
13,353	10,920	10,968	35,241	8,743	7,556	7,438	23,737	418	370	332	1,121
651	716	583	1,950	552	595	470	1,617	17	19	15	51
1,472	1,271	1,014	3,757	1,000	868	702	2,570	43	39	27	108
1,463	1,422	1,124	4,009	1,099	1,113	950	3,162	44	47	39	130
7,932	6,406	5,295	19,633	4,791	4,340	3,626	12,757	260	223	174	657
43,259	37,193	30,736	111,188	29,048	26,263	21,891	77,202	1,438	1,305	994	3,737
8,269	6,676	7,502	22,447	4,156	3,203	3,505	10,864	391	297	347	1,035
4,437	3,829	3,584	11,850	2,785	2,653	2,401	7,839	114	112	96	322
1,227	1,315	1,295	3,837	798	862	849	2,509	37	41	41	118
1,027	885	953	2,865	640	595	661	1,896	28	25	26	79
1,146	1,129	1,116	3,391	721	711	628	2,060	21	22	21	64
5,282	4,830	6,145	16,257	3,226	2,946	3,210	9,382	158	143	161	462
737	781	817	2,335	500	526	521	1,547	18	17	17	51
1,276	1,319	1,492	4,087	826	859	820	2,505	39	41	47	126
2,949	3,087	2,974	9,010	2,105	1,990	2,107	6,202	128	129	112	369
10,782	9,485	8,454	28,721	6,875	6,545	5,964	19,384	364	347	316	1,028
3,330	3,576	3,069	9,975	2,294	2,288	2,070	6,652	109	124	113	346
40,462	36,912	37,401	114,775	24,926	23,178	22,736	70,840	1,405	1,298	1,296	3,999
2,764	2,526	2,295	7,585	1,796	1,837	1,607	5,240	71	72	61	203
11,001	9,065	12,049	32,115	5,445	4,489	5,917	15,851	286	228	347	860
1,675	1,497	1,388	4,560	1,207	1,091	1,043	3,341	42	37	32	111
962	945	902	2,809	860	841	824	2,525	20	20	21	60
7,502	6,223	5,757	19,482	5,364	4,618	4,197	14,179	261	217	184	662
6,639	4,855	5,533	17,027	4,584	3,492	3,778	11,854	181	143	153	477
2,732	2,414	2,624	7,770	1,611	1,575	1,404	4,590	55	55	47	157
2,201	2,187	2,239	6,627	1,237	1,071	1,451	3,759	59	62	56	177
35,476	29,712	32,787	97,975	22,104	19,014	20,221	61,339	974	833	900	2,707
5,112	4,974	5,349	15,435	3,861	3,847	3,849	11,557	157	157	174	488
433	486	462	1,381	357	318	294	969	15	16	17	48
4,365	3,134	5,041	12,540	3,212	2,469	3,621	9,302	108	86	117	312
4,606	4,870	3,712	13,188	2,946	2,929	2,559	8,434	187	188	142	517
12,720	12,036	14,402	39,158	8,770	7,435	8,596	24,801	316	295	364	975
1,287	1,208	1,387	3,882	882	761	954	2,597	36	37	42	115
28,523	26,708	30,353	85,584	20,028	17,759	19,873	57,660	819	780	855	2,455
1,268	1,342	974	3,584	876	1,001	728	2,605	31	36	25	91
623	668	813	2,104	509	501	620	1,630	17	17	20	54
4,208	3,751	2,881	10,840	2,655	2,043	1,735	6,433	160	134	100	394
8,420	7,244	8,425	24,089	6,357	5,412	6,040	17,809	232	201	216	649
957	949	853	2,759	587	583	553	1,723	22	21	23	66
1,607	1,526	1,932	5,065	1,316	1,161	1,475	3,952	46	45	54	145
4,085	3,862	3,555	11,502	2,557	2,298	2,275	7,130	120	118	113	351
1,248	1,124	1,084	3,456	1,008	922	842	2,772	37	32	33	102
1,217	1,119	881	3,217	624	571	594	1,789	34	34	27	95
3,372	3,204	3,354	9,930	2,367	2,147	2,367	6,881	107	94	96	298
27,005	24,789	24,752	76,546	18,856	16,639	17,229	52,724	806	732	708	2,246
776,255	755,468	680,420	2,212,143	433,661	408,296	385,635	1,227,592	38,384	40,786	31,331	110,502

TABLE 8 — HOLIDAY FLATS, UNITS AND HOUSES BY STATISTICAL DIVISION, VICTORIA

Particulars	Western District (SD) and Central Highlands (SD)					
	Melbourne (SD)	Barwon (SD)	Wimmera (SD)	Mallee (SD)	Loddon- Campaspe (SD)	
LETTING ENTITIES, CAPACITY AND EMPLOYMENT						
<i>December quarter 1992—</i>						
Letting entities	37	20	8	7	10	6
Flats, units and houses						
Single bedroom	666	47	8	44	25	22
Multiple bedroom	741	399	76	44	78	25
<i>Total flats, units and houses</i>	<i>1,407</i>	<i>446</i>	<i>84</i>	<i>88</i>	<i>103</i>	<i>47</i>
Bed spaces	5,087	2,335	416	403	432	213
Employment (persons) (a)	289	46	19	24	18	17
<i>December quarter 1993—</i>						
Letting entities	39	22	14	8	9	6
Flats, units and houses						
Single bedroom	694	34	23	48	25	24
Multiple bedroom	626	341	100	52	72	25
<i>Total flats, units and houses</i>	<i>1,320</i>	<i>375</i>	<i>123</i>	<i>100</i>	<i>97</i>	<i>49</i>
Bed spaces	4,652	2,078	570	481	412	214
Employment (persons) (a)	255	59	38	34	18	21
UNIT NIGHTS OCCUPIED						
<i>December quarter 1992</i>	<i>66,446</i>	<i>8,853</i>	<i>2,976</i>	<i>5,209</i>	<i>5,313</i>	<i>2,219</i>
<i>1993—</i>						
October	22,583	2,675	1,733	2,476	1,728	644
November	22,063	2,810	1,492	1,774	1,221	620
December	20,472	3,593	1,780	1,450	1,076	588
<i>December quarter 1993</i>	<i>65,118</i>	<i>9,078</i>	<i>5,005</i>	<i>5,700</i>	<i>4,025</i>	<i>1,852</i>
UNIT OCCUPANCY RATES (per cent)						
<i>December quarter 1992</i>	<i>51.3</i>	<i>21.6</i>	<i>38.5</i>	<i>64.7</i>	<i>56.1</i>	<i>51.3</i>
<i>1993—</i>						
October	55.2	23.0	45.4	79.9	57.5	42.4
November	57.5	25.0	40.4	59.1	42.0	42.2
December	51.6	30.9	46.7	46.8	35.8	38.7
<i>December quarter 1993</i>	<i>54.7</i>	<i>26.3</i>	<i>44.2</i>	<i>62.0</i>	<i>45.1</i>	<i>41.1</i>
UNIT LETTINGS						
<i>December quarter 1992</i>	<i>16,347</i>	<i>2,581</i>	<i>959</i>	<i>1,313</i>	<i>1,207</i>	<i>789</i>
<i>1993—</i>						
October	5,884	933	543	654	453	304
November	5,406	862	471	601	309	262
December	5,194	892	533	463	246	224
<i>December quarter 1993</i>	<i>16,484</i>	<i>2,687</i>	<i>1,547</i>	<i>1,718</i>	<i>1,008</i>	<i>790</i>
AVERAGE LENGTH OF STAY (days)						
<i>December quarter 1992</i>	<i>4.1</i>	<i>3.4</i>	<i>3.1</i>	<i>4.0</i>	<i>4.4</i>	<i>2.8</i>
<i>1993—</i>						
October	3.8	2.9	3.2	3.8	3.8	2.1
November	4.1	3.3	3.2	3.0	4.0	2.4
December	3.9	4.0	3.3	3.1	4.4	2.6
<i>December quarter 1993</i>	<i>4.0</i>	<i>3.4</i>	<i>3.2</i>	<i>3.3</i>	<i>4.0</i>	<i>2.3</i>
TAKINGS FROM ACCOMMODATION (\$'000)						
<i>December quarter 1992</i>	<i>6,145</i>	<i>621</i>	<i>160</i>	<i>181</i>	<i>255</i>	<i>110</i>
<i>1993—</i>						
October	2,016	174	82	143	91	32
November	2,003	188	79	123	54	32
December	1,873	266	109	88	64	31
<i>December quarter 1993</i>	<i>5,891</i>	<i>628</i>	<i>270</i>	<i>354</i>	<i>209</i>	<i>94</i>



TABLE 8 — HOLIDAY FLATS, UNITS AND HOUSES BY STATISTICAL DIVISION, VICTORIA — continued

Particulars	Victoria						Total
	Goulburn (SD)	Ovens- Murray (SD)	East Gippsland (SD)	Gippsland (SD)	Real estate agents	Other letting entities	
LETTING ENTITIES, CAPACITY AND EMPLOYMENT							
<i>December quarter 1992—</i>							
Letting entities	7	34	45	8	26	156	182
Flats, units and houses							
Single bedroom	20	58	97	19	58	948	1,006
Multiple bedroom	39	298	351	259	1,012	1,298	2,310
<i>Total flats, units and houses</i>	<i>59</i>	<i>356</i>	<i>448</i>	<i>278</i>	<i>1,070</i>	<i>2,246</i>	<i>3,316</i>
Bed spaces	299	1,946	2,197	1,586	6,106	8,808	14,914
Employment (persons) (a)	19	98	91	54		675	675
<i>December quarter 1993—</i>							
Letting entities	7	41	50	8	23	181	204
Flats, units and houses							
Single bedroom	18	58	81	27	44	988	1,032
Multiple bedroom	42	366	420	270	823	1,491	2,314
<i>Total flats, units and houses</i>	<i>60</i>	<i>424</i>	<i>501</i>	<i>297</i>	<i>867</i>	<i>2,479</i>	<i>3,346</i>
Bed spaces	313	2,211	2,480	1,794	5,256	9,949	15,205
Employment (persons) (a)	18	74	106	53		676	676
UNIT NIGHTS OCCUPIED							
<i>December quarter 1992</i>	<i>1,866</i>	<i>8,118</i>	<i>11,080</i>	<i>5,257</i>	<i>7,425</i>	<i>109,912</i>	<i>117,337</i>
<i>1993</i>							
October	540	2,274	4,491	1,487	1,309	39,322	40,631
November	535	2,293	4,449	1,555	1,420	37,392	38,812
December	570	2,717	5,032	2,086	3,721	35,643	39,364
<i>December quarter 1993</i>	<i>1,645</i>	<i>7,284</i>	<i>13,972</i>	<i>5,128</i>	<i>6,450</i>	<i>112,357</i>	<i>118,807</i>
UNIT OCCUPANCY RATES (per cent)							
<i>December quarter 1992</i>	<i>34.4</i>	<i>24.8</i>	<i>27.2</i>	<i>20.6</i>	<i>7.5</i>	<i>53.3</i>	<i>38.5</i>
<i>1993—</i>							
October	29.0	17.6	28.9	16.2	4.9	51.3	39.3
November	29.7	18.2	29.6	17.5	5.5	51.2	39.2
December	30.6	20.7	32.4	22.7	13.8	47.1	38.4
<i>December quarter 1993</i>	<i>29.8</i>	<i>18.8</i>	<i>30.3</i>	<i>18.8</i>	<i>8.1</i>	<i>49.9</i>	<i>38.9</i>
UNIT LETTINGS							
<i>December quarter 1992</i>	<i>837</i>	<i>1,953</i>	<i>2,891</i>	<i>1,171</i>	<i>1,033</i>	<i>29,015</i>	<i>30,048</i>
<i>1993—</i>							
October	283	688	1,247	456	244	11,201	11,445
November	249	681	1,176	406	237	10,186	10,423
December	215	700	1,241	398	552	9,554	10,106
<i>December quarter 1993</i>	<i>747</i>	<i>2,069</i>	<i>3,664</i>	<i>1,260</i>	<i>1,033</i>	<i>30,941</i>	<i>31,974</i>
AVERAGE LENGTH OF STAY (days)							
<i>December quarter 1992</i>	<i>2.2</i>	<i>4.2</i>	<i>3.8</i>	<i>4.5</i>	<i>7.2</i>	<i>3.8</i>	<i>3.9</i>
<i>1993—</i>							
October	1.9	3.3	3.6	3.3	5.4	3.5	3.6
November	2.1	3.4	3.8	3.8	6.0	3.7	3.7
December	2.7	3.9	4.1	5.2	6.7	3.7	3.9
<i>December quarter 1993</i>	<i>2.2</i>	<i>3.5</i>	<i>3.8</i>	<i>4.1</i>	<i>6.2</i>	<i>3.6</i>	<i>3.7</i>
TAKINGS FROM ACCOMMODATION (\$'000)							
<i>December quarter 1992</i>	<i>97</i>	<i>366</i>	<i>549</i>	<i>321</i>	<i>458</i>	<i>8,347</i>	<i>8,805</i>
<i>1993—</i>							
October	30	98	201	82	49	2,900	2,949
November	32	100	211	82	67	2,836	2,903
December	33	134	303	131	212	2,819	3,032
<i>December quarter 1993</i>	<i>96</i>	<i>331</i>	<i>715</i>	<i>295</i>	<i>329</i>	<i>8,555</i>	<i>8,884</i>

(a) Employment numbers exclude real estate agents and their employees.

TABLE 9 — CARAVAN PARKS: STATISTICAL DIVISIONS AND SELECTED

Statistical Divisions and Selected Statistical Local Areas	Establishments	Capacity				Cabins, flats etc.	Total	Sites occupied by long-term guests	Other sites permanently reserved	Employment (persons)
		On-site vans	Other powered sites	Unpowered sites						
Flinders (S)	39	110	3,571	529	99	4,309	182	1,911	116	
Hastings (S)	6	33	283	280	6	602	78	107	13	
Healesville (S)	3	13	152	15	30	210	57	21	14	
Springvale (C)	5	187	475	72	10	744	510	15	32	
Sunshine (C)	3	86	134	17	8	245	92	2	12	
Werribee (C)	4	13	217	20	22	272	143	7	15	
Balance	32	573	2,081	316	295	3,265	1,505	136	137	
<i>Melbourne (SD)</i>	<i>92</i>	<i>1,015</i>	<i>6,913</i>	<i>1,249</i>	<i>470</i>	<i>9,647</i>	<i>2,567</i>	<i>2,199</i>	<i>339</i>	
Barrabool (S) Pts. A and B	7	47	820	6	29	902	25	278	30	
Bellarine (RC) Pts. A and B	16	66	3,686	426	227	4,405	176	1,710	83	
Otway (S)	10	36	512	335	62	945	7	182	25	
Queenscliffe (B)	8	2	690		25	717	14	397	20	
South Barwon (C) Pts. A and B	13	119	2,511	147	115	2,892	288	846	87	
Balance	9	20	474	53	9	556	42	17	18	
<i>Barwon (SD)</i>	<i>63</i>	<i>290</i>	<i>8,693</i>	<i>967</i>	<i>467</i>	<i>10,417</i>	<i>552</i>	<i>3,430</i>	<i>263</i>	
Heywood (S)	4	15	130	210	12	367	4	5	6	
Port Fairy (B)	6	22	919	696	34	1,671	12	46	22	
Portland (C)	5	44	404	58	38	544	58	6	15	
Warrnambool (C)	6	42	1,299	121	131	1,593	73	4	53	
Balance	23	42	862	639	44	1,587	46	60	42	
<i>Western District (SD)</i>	<i>44</i>	<i>165</i>	<i>3,614</i>	<i>1,724</i>	<i>259</i>	<i>5,762</i>	<i>193</i>	<i>121</i>	<i>138</i>	
Ballaarat (C)	4	77	343	162	44	626	64	1	25	
Ballan (S)	4	5	135	21	19	180	26	72	7	
Balance	16	64	963	613	74	1,714	146	203	35	
<i>Central Highlands (SD)</i>	<i>24</i>	<i>146</i>	<i>1,441</i>	<i>796</i>	<i>137</i>	<i>2,520</i>	<i>236</i>	<i>276</i>	<i>67</i>	
Stawell (S)	5	27	415	534	106	1,082		90	37	
Wimmera (S)	4	17	44	26	19	106			9	
Balance	18	75	722	420	48	1,265	89	27	40	
<i>Wimmera (SD)</i>	<i>27</i>	<i>119</i>	<i>1,181</i>	<i>980</i>	<i>173</i>	<i>2,453</i>	<i>89</i>	<i>117</i>	<i>86</i>	
Kerang (B) and Kerang (S)	7	38	273	205	24	540	20	82	16	
Mildura (C)	12	192	625	121	145	1,083	259	6	59	
Mildura (S) Pts. A and B	8	70	514	141	50	775	128	2	25	
Swan Hill (C)	5	34	414	161	64	673	31	11	26	
Swan Hill (S)	6	52	270	198	14	534	18	7	16	
Balance	8	11	199	248	2	460	14	2	13	
<i>Mallee (SD)</i>	<i>46</i>	<i>397</i>	<i>2,295</i>	<i>1,074</i>	<i>299</i>	<i>4,065</i>	<i>470</i>	<i>110</i>	<i>155</i>	

## STATISTICAL LOCAL AREAS (a), VICTORIA, DECEMBER QUARTER 1993

<i>Site nights occupied</i>				<i>Site occupancy rates (per cent)</i>				<i>Takings from accommodation (\$'000)</i>			
<i>Oct.</i>	<i>Nov.</i>	<i>Dec.</i>	<i>Dec. qtr</i>	<i>Oct.</i>	<i>Nov.</i>	<i>Dec.</i>	<i>Dec. qtr</i>	<i>Oct.</i>	<i>Nov.</i>	<i>Dec.</i>	<i>Dec. qtr</i>
65,751	72,513	94,769	233,033	49.2	56.1	70.9	58.8	394	421	526	1,340
5,942	5,911	7,163	19,016	31.8	32.7	38.4	34.3	73	52	71	196
3,741	3,760	3,756	11,257	57.5	59.7	57.7	58.3	39	36	38	113
16,620	16,414	16,839	49,873	72.1	73.5	73.0	72.9	173	162	183	518
4,510	4,553	4,442	13,505	59.4	61.9	58.5	59.9	29	27	30	87
5,139	4,930	5,138	15,207	60.9	60.4	60.9	60.8	39	38	40	117
62,386	63,662	63,342	189,390	61.6	65.0	62.6	63.1	749	769	831	2,349
<i>164,089</i>	<i>171,743</i>	<i>195,449</i>	<i>531,281</i>	<i>54.9</i>	<i>59.3</i>	<i>65.4</i>	<i>59.9</i>	<i>1,497</i>	<i>1,506</i>	<i>1,718</i>	<i>4,720</i>
10,790	10,362	15,894	37,046	39.0	38.7	56.8	44.9	96	78	249	423
61,180	59,145	84,159	204,484	44.8	44.8	61.6	50.5	431	256	379	1,065
6,780	6,973	11,346	25,099	23.1	24.6	38.7	28.9	52	54	115	222
13,625	13,594	16,749	43,968	61.3	63.2	75.4	66.7	76	118	168	362
40,311	47,832	52,369	140,512	45.0	55.1	58.4	52.8	406	538	439	1,384
2,440	2,669	5,604	10,713	14.2	16.0	32.5	20.9	20	20	65	105
<i>135,126</i>	<i>140,575</i>	<i>186,121</i>	<i>461,822</i>	<i>41.9</i>	<i>45.0</i>	<i>57.6</i>	<i>48.2</i>	<i>1,081</i>	<i>1,065</i>	<i>1,415</i>	<i>3,561</i>
586	494	1,234	2,314	5.2	4.5	10.8	6.9	10	9	20	39
2,824	2,810	5,936	11,570	5.5	5.6	11.5	7.5	31	29	95	154
3,258	3,337	3,518	10,113	19.3	20.4	20.9	20.2	38	39	43	120
6,279	6,524	10,256	23,059	12.7	13.7	20.8	15.7	148	134	236	518
6,074	6,487	8,184	20,745	12.3	13.6	16.6	14.2	67	66	91	224
<i>19,021</i>	<i>19,652</i>	<i>29,128</i>	<i>67,801</i>	<i>10.6</i>	<i>11.4</i>	<i>16.3</i>	<i>12.8</i>	<i>295</i>	<i>277</i>	<i>484</i>	<i>1,056</i>
5,224	5,201	4,503	14,928	26.9	27.7	23.2	25.9	88	84	74	246
3,247	3,199	3,334	9,780	58.2	59.2	59.7	59.1	20	21	21	62
12,727	12,581	14,179	39,487	24.0	24.5	26.7	25.0	98	94	112	303
<i>21,198</i>	<i>20,981</i>	<i>22,016</i>	<i>64,195</i>	<i>27.1</i>	<i>27.8</i>	<i>28.2</i>	<i>27.7</i>	<i>206</i>	<i>198</i>	<i>207</i>	<i>612</i>
10,451	7,279	8,874	26,604	31.2	22.4	26.5	26.7	199	143	189	531
791	324	565	1,680	24.1	10.2	17.2	17.2	22	12	16	49
6,179	6,243	6,009	18,431	15.8	16.5	15.3	15.8	69	66	67	203
<i>17,421</i>	<i>13,846</i>	<i>15,448</i>	<i>46,715</i>	<i>22.9</i>	<i>18.8</i>	<i>20.3</i>	<i>20.7</i>	<i>290</i>	<i>221</i>	<i>272</i>	<i>783</i>
3,588	3,507	3,803	10,898	21.4	21.6	22.7	21.9	24	27	25	76
15,717	13,120	13,608	42,445	46.8	40.4	40.5	42.6	244	188	221	652
5,719	5,468	6,090	17,277	23.8	23.5	25.3	24.2	50	46	59	155
3,454	3,102	3,620	10,176	16.6	15.4	17.4	16.4	54	46	77	177
1,709	1,388	2,357	5,454	10.3	8.7	14.2	11.1	18	15	28	61
855	817	822	2,494	6.0	5.9	5.8	5.9	7	6	7	20
<i>31,042</i>	<i>27,402</i>	<i>30,300</i>	<i>88,744</i>	<i>24.6</i>	<i>22.5</i>	<i>24.0</i>	<i>23.7</i>	<i>396</i>	<i>328</i>	<i>417</i>	<i>1,141</i>

TABLE 9—CARAVAN PARKS: STATISTICAL DIVISIONS AND SELECTED

Statistical Divisions and Selected Statistical Local Areas	Capacity					Total	Sites occupied by long-term guests	Other sites permanently reserved	Employment (persons)
	Establishments	On-site vans	Other powered sites	Unpowered sites	Cabins, flats etc.				
Echuca (C)	5	71	569	118	36	794	95	185	26
Korong (S)	4	14	123	150	8	295	23	17	6
Marong (RC) Pts A & B	5	51	331	158	31	571	74	108	27
Balance	33	191	2,865	907	102	4,065	384	1,471	104
<i>Loddon-Campaspe (SD)</i>	47	327	3,888	1,333	177	5,725	576	1,781	163
Alexandra (S)	12	55	1,042	550	50	1,697	42	707	54
Cobram (S)	5	30	425	572	17	1,044	44	280	18
Mansfield (S)	9	26	842	137	72	1,077	4	660	41
Nathalia (S)	5	16	219	104	8	347	27	123	14
Rodney (S) Pts. A and B	6	64	261	52	20	397	75	11	11
Shepparton (C)	5	36	437	129	47	649	167	111	16
Balance	26	187	1,535	620	77	2,419	320	799	62
<i>Goulburn (SD)</i>	68	414	4,761	2,164	291	7,630	679	2,691	216
Beechworth (S)	3	31	168	55	28	282	20	37	9
Bright (S)	16	87	1,352	457	148	2,044	6	437	44
Oxley (S)	4	18	87	102	8	215	7	12	6
Tallangatta (S) Pts. A and B	5	16	324	181	13	534	8	80	9
Wangaratta (C)	3	42	259	95	26	422	59	10	14
Wodonga (RC)	4	39	384	120	11	554	84	135	12
Yarrawonga (S)	5	14	545	181	37	777	62	107	13
Balance	8	47	441	339	25	852	56	58	17
<i>Ovens Murray (SD)</i>	48	294	3,560	1,530	296	5,680	302	876	124
Bairnsdale (S) Pts. A and B	8	57	631	191	24	903	86	322	19
Maffra (S)	6	10	392	312	3	717	18	209	20
Orbost (S)	13	90	834	672	45	1,641	28	94	38
Tambo (S) Pts. A and B	37	178	1,374	349	257	2,158	130	325	142
Balance	11	78	521	365	39	1,003	103	86	35
<i>East Gippsland (SD)</i>	75	413	3,752	1,889	368	6,422	365	1,036	254
Alberton (S)	8	34	456	174	21	685	14	264	22
Bass (S)	6	26	409	63	2	500	10	204	12
Buln Buln (S)	5	39	171	101	34	345	53	46	10
Phillip Island (S)	13	96	1,209	92	36	1,433	10	745	52
Rosedale (S)	3	23	381	81	8	493	12	143	8
South Gippsland (S)	9	38	332	389	24	783	17	269	22
Traralgon (C)	4	57	382		39	478	171	12	9
Woorayl (S)	7	16	640	185	17	858	14	380	25
Balance	12	50	857	339	35	1,281	161	130	32
<i>Gippsland (SD)</i>	67	379	4,837	1,424	216	6,856	462	2,193	192
<i>Victoria</i>									
Short-term parks	442	2,046	36,246	13,064	2,245	53,601	1,854	14,425	1,487
Long-term parks	159	1,913	8,689	2,066	908	13,576	4,637	405	510
Total	601	3,959	44,935	15,130	3,153	67,177	6,491	14,830	1,997

(a) Permanently reserved sites (including on-site vans and cabins permanently reserved) have been recorded continuously as site nights occupied. See Explanatory Notes 11 and 14.

## STATISTICAL LOCAL AREAS (a), VICTORIA, DECEMBER QUARTER 1993—continued

<i>Site nights occupied</i>				<i>Site occupancy rates (per cent)</i>				<i>Takings from accommodation (\$ '000)</i>			
<i>Oct.</i>	<i>Nov.</i>	<i>Dec.</i>	<i>Dec. qtr</i>	<i>Oct.</i>	<i>Nov.</i>	<i>Dec.</i>	<i>Dec. qtr</i>	<i>Oct.</i>	<i>Nov.</i>	<i>Dec.</i>	<i>Dec. qtr</i>
9,467	9,724	11,272	30,463	55.1	40.8	45.8	46.4	69	81	124	275
1,707	1,856	2,435	5,998	18.7	21.0	26.6	22.1	12	10	11	34
7,464	7,513	7,480	22,457	42.2	43.9	42.3	42.7	70	74	107	252
64,078	62,348	64,656	191,082	50.8	51.1	51.3	51.1	276	281	392	949
82,716	81,441	85,843	250,000	48.6	47.4	48.4	48.1	428	447	634	1,509
24,990	24,182	25,817	74,989	47.5	47.5	49.1	48.0	103	103	118	324
10,498	10,206	10,832	31,536	32.4	32.6	33.5	32.8	37	52	72	161
21,729	21,185	23,045	65,959	65.1	65.6	69.0	66.6	114	113	127	354
4,538	4,643	5,913	15,094	42.2	44.6	55.0	47.3	8	10	18	36
2,759	3,115	3,327	9,201	22.4	26.2	27.0	25.2	30	27	34	90
10,257	10,486	11,115	31,858	51.0	53.9	55.2	53.4	57	61	63	182
34,899	35,841	37,638	108,378	48.4	49.4	50.2	49.3	160	166	160	487
109,670	109,658	117,687	337,015	46.9	47.9	49.8	48.2	509	532	592	1,633
2,340	2,465	3,018	7,823	26.8	29.1	34.5	30.2	13	20	27	60
12,029	16,577	24,261	52,867	22.7	27.0	38.3	29.8	71	124	223	418
766	712	755	2,233	11.5	11.0	11.3	11.3	7	6	6	19
3,152	3,168	3,585	9,905	19.0	19.8	21.7	20.2	9	13	15	37
2,541	3,823	3,705	10,069	19.4	30.2	28.3	25.9	26	35	39	100
7,583	7,425	8,820	23,828	44.2	44.7	51.4	46.8	36	39	70	145
6,782	7,159	9,299	23,240	28.2	30.7	38.6	32.5	59	62	92	213
2,747	4,365	5,609	12,721	13.0	17.1	21.2	17.4	24	32	45	100
37,940	45,694	59,052	142,686	23.7	26.8	33.5	28.2	245	331	516	1,092
13,119	12,929	14,219	40,267	46.9	47.7	50.8	48.5	72	73	85	230
7,471	8,311	9,602	25,384	33.6	38.6	43.2	38.5	16	42	36	94
7,718	7,989	15,728	31,435	15.2	16.2	30.9	20.8	50	54	160	263
19,299	18,389	24,174	61,862	28.8	28.4	36.1	31.2	176	174	361	711
7,232	7,357	8,549	23,138	23.3	24.4	27.5	25.1	65	66	94	225
54,839	54,975	72,272	182,086	27.5	28.5	36.3	30.8	379	408	737	1,524
10,121	10,151	10,056	30,328	47.7	49.4	47.4	48.1	25	28	48	101
7,148	6,794	7,592	21,534	46.1	45.3	49.0	46.8	21	37	36	94
3,175	3,136	3,225	9,536	29.7	30.3	30.2	30.0	24	26	27	77
26,126	25,134	28,216	79,476	58.8	58.5	63.5	60.3	154	117	192	463
5,130	4,953	6,039	16,122	33.6	33.5	39.5	35.5	16	14	45	75
9,595	9,654	11,220	30,469	39.5	41.1	46.2	42.3	37	48	47	133
5,807	5,568	5,822	17,197	39.2	38.8	39.3	39.1	44	44	42	130
12,854	12,639	14,050	39,543	48.3	49.1	52.8	50.1	40	57	98	195
10,465	10,276	12,463	33,204	26.4	26.7	31.4	28.2	55	51	90	197
90,421	88,305	98,683	277,409	42.5	42.9	46.4	44.0	416	423	626	1,465
582,622	592,594	724,130	1,899,346	35.6	36.9	43.6	38.7	3,940	3,930	5,598	13,469
180,861	181,678	187,869	550,408	43.1	44.6	44.6	44.1	1,802	1,806	2,020	5,628
763,483	774,272	911,999	2,449,754	37.1	38.4	43.8	39.8	5,742	5,736	7,618	19,096

TABLE 10—CARAVAN PARKS BY STATISTICAL DIVISION, VICTORIA

Particulars	Melbourne (SD)			Barwon (SD)			Western District (SD)			Central Highlands (SD)		
	Short-term	Long-term	Total	Short-term	Long-term	Total	Short-term	Long-term	Total	Short-term	Long-term	Total
<b>ESTABLISHMENTS, CAPACITY AND EMPLOYMENT</b>												
<i>December quarter 1992</i>												
Establishments	49	42	91	51	11	62	32	11	43	17	6	23
Capacity												
On-site vans	200	873	1,073	179	122	301	120	65	185	101	48	149
Other powered sites	4,128	2,833	6,961	7,835	681	8,516	3,048	537	3,585	1,170	158	1,328
Unpowered sites	971	313	1,284	960	52	1,012	1,509	117	1,626	649	50	699
Cabins, flats, etc.	153	234	387	370	80	450	216	37	253	85	45	130
<i>Total capacity</i>	<i>5,452</i>	<i>4,253</i>	<i>9,705</i>	<i>9,344</i>	<i>935</i>	<i>10,279</i>	<i>4,893</i>	<i>756</i>	<i>5,649</i>	<i>2,005</i>	<i>301</i>	<i>2,306</i>
Sites occupied by long-term guests	273	2,418	2,691	176	376	552	90	106	196	130	95	225
Other sites permanently reserved (a)	1,879	196	2,075	3,142	14	3,156	101	14	115	190	12	202
Employment (persons)	164	179	343	225	40	265	107	26	133	50	15	65
<i>December quarter 1993</i>												
Establishments	50	42	92	52	11	63	31	13	44	18	6	24
Capacity												
On-site vans	179	836	1,015	180	110	290	88	77	165	101	45	146
Other powered sites	4,113	2,800	6,913	8,014	679	8,693	2,983	631	3,614	1,267	174	1,441
Unpowered sites	951	298	1,249	923	44	967	1,553	171	1,724	750	46	796
Cabins, flats, etc.	200	270	470	387	80	467	206	53	259	91	46	137
<i>Total capacity</i>	<i>5,443</i>	<i>4,204</i>	<i>9,647</i>	<i>9,504</i>	<i>913</i>	<i>10,417</i>	<i>4,830</i>	<i>932</i>	<i>5,762</i>	<i>2,209</i>	<i>311</i>	<i>2,520</i>
Sites occupied by long-term guests	241	2,326	2,567	200	352	552	77	116	193	141	95	236
Other sites permanently reserved (a)	2,072	127	2,199	3,410	20	3,430	109	12	121	267	9	276
Employment (persons)	156	183	339	225	38	263	106	32	138	52	15	67
<b>SITE NIGHTS OCCUPIED ('000) (a)</b>												
<i>December quarter 1992</i>	<i>287.6</i>	<i>273.9</i>	<i>561.5</i>	<i>376.0</i>	<i>44.8</i>	<i>420.8</i>	<i>49.4</i>	<i>75.8</i>	<i>65.2</i>	<i>45.3</i>	<i>11.6</i>	<i>56.8</i>
<i>1993—</i>												
October	78.6	85.5	164.1	120.9	14.3	135.1	13.2	5.8	19.0	17.2	4.0	21.2
November	84.6	87.2	171.7	126.6	14.0	140.6	13.7	6.0	19.7	17.1	3.9	21.0
December	108.7	86.8	195.4	171.5	14.6	186.1	22.8	6.3	29.1	17.7	4.3	22.0
<i>December quarter 1993</i>	<i>271.8</i>	<i>259.5</i>	<i>531.3</i>	<i>418.9</i>	<i>42.9</i>	<i>461.8</i>	<i>49.6</i>	<i>18.2</i>	<i>67.8</i>	<i>52.0</i>	<i>12.2</i>	<i>64.2</i>
<b>SITE OCCUPANCY RATES (per cent) (a)</b>												
<i>December quarter 1992</i>	<i>57.3</i>	<i>70.0</i>	<i>62.9</i>	<i>43.7</i>	<i>52.0</i>	<i>44.5</i>	<i>11.0</i>	<i>22.8</i>	<i>12.6</i>	<i>24.5</i>	<i>41.8</i>	<i>26.8</i>
<i>1993—</i>												
October	46.6	65.6	54.9	41.1	50.4	41.9	8.8	20.2	10.6	25.1	41.7	27.1
November	51.8	69.1	59.3	44.4	51.2	45.0	9.4	21.4	11.4	25.7	42.1	27.8
December	64.4	66.6	65.4	58.2	51.6	57.6	15.2	22.0	16.3	25.9	44.4	28.2
<i>December quarter 1993</i>	<i>54.3</i>	<i>67.1</i>	<i>59.9</i>	<i>47.9</i>	<i>51.0</i>	<i>48.2</i>	<i>11.2</i>	<i>21.2</i>	<i>12.8</i>	<i>25.6</i>	<i>42.8</i>	<i>27.7</i>
<b>TAKINGS FROM ACCOMMODATION (\$'000)</b>												
<i>December quarter 1992</i>	<i>1,745</i>	<i>2,895</i>	<i>4,640</i>	<i>3,022</i>	<i>408</i>	<i>3,430</i>	<i>752</i>	<i>159</i>	<i>911</i>	<i>424</i>	<i>124</i>	<i>548</i>
<i>1993—</i>												
October	573	923	1,497	949	132	1,081	232	63	295	161	45	206
November	569	937	1,506	934	131	1,065	216	61	277	157	42	198
December	713	1,005	1,718	1,260	155	1,415	413	71	484	159	48	207
<i>December quarter 1993</i>	<i>1,855</i>	<i>2,865</i>	<i>4,720</i>	<i>3,143</i>	<i>417</i>	<i>3,561</i>	<i>860</i>	<i>195</i>	<i>1,056</i>	<i>477</i>	<i>135</i>	<i>612</i>

TABLE 10 — CARAVAN PARKS BY STATISTICAL DIVISION, VICTORIA — continued

Particulars	Wimmera (SD)			Mallee (SD)			Loddon-Campaspe (SD)			Goulburn (SD)		
	Total	Short-term	Long-term	Total	Short-term	Long-term	Total	Short-term	Long-term	Total		
<b>ESTABLISHMENTS, CAPACITY AND EMPLOYMENT</b>												
<i>December quarter 1992—</i> Establishments	26	34	11	45	32	14	46	49	18	67		
Capacity												
On-site vans	165	271	155	426	204	88	292	214	220	434		
Other powered sites	1,176	1,526	708	2,234	3,164	610	3,774	4,087	580	4,667		
Unpowered sites	1,014	869	176	1,045	898	356	1,254	1,957	161	2,118		
Cabins, flats, etc.	119	227	37	264	115	34	149	212	58	270		
<i>Total capacity</i>	<i>2,474</i>	<i>2,893</i>	<i>1,076</i>	<i>3,969</i>	<i>4,381</i>	<i>1,088</i>	<i>5,469</i>	<i>6,470</i>	<i>1,019</i>	<i>7,489</i>		
Sites occupied by long-term guests	93	152	257	409	267	295	562	347	286	633		
Other sites permanently reserved (a)	129	80	4	84	1,625	87	1,712	2,589	23	2,612		
Employment (persons)	72	116	31	147	109	32	141	177	42	219		
<i>December quarter 1993—</i> Establishments	27	31	15	46	34	13	47	47	21	68		
Capacity												
On-site vans	119	219	178	397	186	141	327	205	209	414		
Other powered sites	1,181	1,393	902	2,295	3,276	612	3,888	4,007	754	4,761		
Unpowered sites	980	814	260	1,074	986	347	1,333	1,973	191	2,164		
Cabins, flats, etc.	173	209	90	299	131	46	177	186	105	291		
<i>Total capacity</i>	<i>2,453</i>	<i>2,635</i>	<i>1,430</i>	<i>4,065</i>	<i>4,579</i>	<i>1,146</i>	<i>5,725</i>	<i>6,371</i>	<i>1,259</i>	<i>7,630</i>		
Sites occupied by long-term guests	89	150	320	470	259	317	576	295	384	679		
Other sites permanently reserved (a)	117	100	10	110	1,716	65	1,781	2,653	38	2,691		
Employment (persons)	86	106	49	155	113	50	163	170	46	216		
<b>SITE NIGHTS OCCUPIED ('000) (a)</b>												
<i>December quarter 1992</i>	<i>48.2</i>	<i>60.9</i>	<i>31.5</i>	<i>92.4</i>	<i>210.1</i>	<i>41.9</i>	<i>252.0</i>	<i>299.7</i>	<i>34.9</i>	<i>334.6</i>		
<i>1993—</i>												
October	17.4	17.3	13.7	31.0	69.4	13.3	82.7	95.4	14.2	109.7		
November	13.8	14.4	13.0	27.4	68.4	13.1	81.4	95.1	14.6	109.7		
December	15.4	16.5	13.8	30.3	71.7	14.2	85.8	102.2	15.5	117.7		
<i>December quarter 1993</i>	<i>46.7</i>	<i>48.3</i>	<i>40.5</i>	<i>88.7</i>	<i>209.5</i>	<i>40.5</i>	<i>250.0</i>	<i>292.7</i>	<i>44.3</i>	<i>337.0</i>		
<b>SITE OCCUPANCY RATES (per cent) (a)</b>												
<i>December quarter 1992</i>	<i>21.2</i>	<i>22.9</i>	<i>31.8</i>	<i>25.3</i>	<i>52.1</i>	<i>41.9</i>	<i>50.1</i>	<i>50.3</i>	<i>37.2</i>	<i>48.6</i>		
<i>1993—</i>												
October	22.9	21.2	30.9	24.6	51.6	37.4	48.6	48.8	37.3	46.9		
November	18.8	18.2	30.3	22.5	49.8	38.0	47.4	49.8	38.6	47.9		
December	20.3	20.2	31.0	24.0	50.5	39.8	48.4	51.7	39.8	49.8		
<i>December quarter 1993</i>	<i>20.7</i>	<i>19.9</i>	<i>30.8</i>	<i>23.7</i>	<i>50.6</i>	<i>38.4</i>	<i>48.1</i>	<i>50.1</i>	<i>38.6</i>	<i>48.2</i>		
<b>TAKINGS FROM ACCOMMODATION (\$'000)</b>												
<i>December quarter 1992</i>	<i>695</i>	<i>870</i>	<i>359</i>	<i>1,229</i>	<i>1,102</i>	<i>228</i>	<i>1,330</i>	<i>1,245</i>	<i>298</i>	<i>1,543</i>		
<i>1993</i>												
October	290	251	145	396	320	108	428	374	135	509		
November	221	194	134	328	334	112	447	400	132	532		
December	272	245	172	417	516	118	634	446	146	592		
<i>December quarter 1993</i>	<i>783</i>	<i>690</i>	<i>452</i>	<i>1,141</i>	<i>1,170</i>	<i>338</i>	<i>1,509</i>	<i>1,220</i>	<i>413</i>	<i>1,633</i>		

TABLE 10—CARAVAN PARKS BY STATISTICAL DIVISION, VICTORIA—continued

Particulars	Ovens-Murray (SD)			East Gippsland (SD)			Gippsland (SD)			Victoria	
	Total	Short-term	Long-term	Total	Short-term	Long-term	Total	Short-term	Long-term	Total	
<b>ESTABLISHMENTS, CAPACITY AND EMPLOYMENT</b>											
<i>December quarter 1992</i>											
Establishments	50	62	11	73	48	17	65	442	149	591	
Capacity											
On-site vans	316	360	87	447	294	153	447	2,373	1,862	4,235	
Other powered sites	3,615	3,086	528	3,614	3,543	1,097	4,640	35,989	8,121	44,110	
Unpowered sites	1,619	1,676	276	1,952	969	309	1,278	12,970	1,931	14,901	
Cabins, flats, etc.	291	285	56	341	101	85	186	2,150	690	2,840	
<i>Total capacity</i>	<i>5,841</i>	<i>5,407</i>	<i>947</i>	<i>6,354</i>	<i>4,907</i>	<i>1,644</i>	<i>6,551</i>	<i>53,482</i>	<i>12,604</i>	<i>66,086</i>	
Sites occupied by long-term guests	272	183	137	320	81	432	513	1,978	4,488	6,466	
Other sites permanently reserved (a)	881	964	45	1,009	1,859	42	1,901	13,399	477	13,876	
Employment (persons)	127	201	29	230	135	37	172	1,464	450	1,914	
<i>December quarter 1993</i>											
Establishments	48	65	10	75	52	15	67	442	159	601	
Capacity											
On-site vans	294	336	77	413	244	135	379	2,046	1,913	3,959	
Other powered sites	3,560	3,226	526	3,752	3,899	938	4,837	36,246	8,689	44,935	
Unpowered sites	1,530	1,578	311	1,889	1,195	229	1,424	13,064	2,066	15,130	
Cabins, flats, etc.	296	320	48	368	114	102	216	2,245	908	3,153	
<i>Total capacity</i>	<i>5,680</i>	<i>5,460</i>	<i>962</i>	<i>6,422</i>	<i>5,452</i>	<i>1,404</i>	<i>6,856</i>	<i>53,601</i>	<i>13,576</i>	<i>67,177</i>	
Sites occupied by long-term guests	302	215	150	365	111	351	462	1,854	4,637	6,491	
Other sites permanently reserved (a)	876	991	45	1,036	2,159	34	2,193	14,425	405	14,830	
Employment (persons)	124	226	28	254	156	36	192	1,487	510	1,997	
<b>SITE NIGHTS OCCUPIED ('000) (a)</b>											
<i>December quarter 1992</i>	<i>148.6</i>	<i>156.7</i>	<i>23.3</i>	<i>180.0</i>	<i>216.0</i>	<i>49.7</i>	<i>265.7</i>	<i>1,884.8</i>	<i>541.1</i>	<i>2,425.9</i>	
<i>1993</i>											
October	37.9	47.4	7.4	54.8	77.7	12.8	90.4	582.6	180.9	763.5	
November	45.7	47.2	7.7	55.0	75.9	12.4	88.3	592.6	181.7	774.3	
December	59.1	63.4	8.9	72.3	85.8	12.8	98.7	724.1	187.9	912.0	
<i>December quarter 1993</i>	<i>142.7</i>	<i>158.1</i>	<i>24.0</i>	<i>182.1</i>	<i>239.4</i>	<i>38.0</i>	<i>277.4</i>	<i>1,899.3</i>	<i>550.4</i>	<i>2,449.8</i>	
<b>SITE OCCUPANCY RATES (per cent) (a)</b>											
<i>December quarter 1992</i>	<i>27.7</i>	<i>31.5</i>	<i>26.7</i>	<i>30.8</i>	<i>47.8</i>	<i>32.9</i>	<i>44.1</i>	<i>38.3</i>	<i>46.7</i>	<i>39.9</i>	
<i>1993</i>											
October	23.7	28.0	24.9	27.5	45.9	29.3	42.5	35.6	43.1	37.1	
November	26.8	28.8	26.8	28.5	46.4	29.5	42.9	36.9	44.6	38.4	
December	33.5	37.5	29.7	36.3	50.8	29.5	46.4	43.6	44.6	43.8	
<i>December quarter 1993</i>	<i>28.2</i>	<i>31.5</i>	<i>27.2</i>	<i>30.8</i>	<i>47.7</i>	<i>29.4</i>	<i>44.0</i>	<i>38.7</i>	<i>44.1</i>	<i>39.8</i>	
<b>TAKINGS FROM ACCOMMODATION (\$'000)</b>											
<i>December quarter 1992</i>	<i>1,081</i>	<i>1,126</i>	<i>254</i>	<i>1,380</i>	<i>1,041</i>	<i>341</i>	<i>1,381</i>	<i>12,975</i>	<i>5,193</i>	<i>18,168</i>	
<i>1993—</i>											
October	245	305	74	379	318	98	416	3,940	1,802	5,742	
November	331	329	79	408	326	97	423	3,930	1,806	5,736	
December	516	626	111	737	527	99	626	5,598	2,020	7,618	
<i>December quarter 1993</i>	<i>1,092</i>	<i>1,260</i>	<i>264</i>	<i>1,524</i>	<i>1,171</i>	<i>294</i>	<i>1,465</i>	<i>13,469</i>	<i>5,628</i>	<i>19,096</i>	

(a) See Explanatory Notes 11 and 14.



TABLE 11 — VISITOR HOSTELS BY STATISTICAL DIVISION, VICTORIA

<i>Particulars</i>	<i>Melbourne (SD)</i>	<i>Wimmera and Ovens-Murray (SDs)</i>	<i>Balance of State</i>	<i>Total Victoria</i>
ESTABLISHMENTS, CAPACITY AND EMPLOYMENT				
<i>December quarter 1992—</i>				
Establishments	16	8	20	44
Bed spaces	1,319	n.p.	n.p.	2,701
Employment (persons)	64	n.p.	n.p.	146
<i>December quarter 1993—</i>				
Establishments	15	7	23	45
Bed spaces	1,238	567	771	2,576
Employment (persons)	66	29	55	150
GUEST NIGHTS				
<i>December quarter 1992</i>	63,596	n.p.	n.p.	91,809
<i>1993—</i>				
October	19,175	3,849	4,168	27,192
November	21,659	4,791	5,061	31,511
December	25,251	4,057	4,708	34,016
<i>December quarter 1993</i>	66,085	12,697	13,937	92,719
BED OCCUPANCY RATES (per cent)				
<i>December quarter 1992</i>	52.4	n.p.	n.p.	36.9
<i>1993—</i>				
October	50.0	21.9	17.4	34.1
November	58.3	28.2	21.9	40.8
December	65.8	23.1	19.7	42.6
<i>December quarter 1993</i>	58.0	24.3	19.6	39.1
GUEST ARRIVALS				
<i>December quarter 1992</i>	19,469	n.p.	n.p.	32,904
<i>1993—</i>				
October	6,663	1,498	2,247	10,408
November	8,050	1,927	2,655	12,632
December	9,588	1,319	2,766	13,673
<i>December quarter 1993</i>	24,301	4,744	7,668	36,713
AVERAGE LENGTH OF STAY (days)				
<i>December quarter 1992</i>	3.3	n.p.	n.p.	2.8
<i>1993—</i>				
October	2.9	2.6	1.9	2.6
November	2.7	2.5	1.9	2.5
December	2.6	3.1	1.7	2.5
<i>December quarter 1993</i>	2.7	2.7	1.8	2.5
TAKINGS FROM ACCOMMODATION (\$'000)				
<i>December quarter 1992</i>	868	n.p.	n.p.	1,168
<i>1993—</i>				
October	244	32	49	326
November	295	33	68	395
December	327	30	66	423
<i>December quarter 1993</i>	866	95	183	1,144

## EXPLANATORY NOTES

\*\*\*\*\*

## INTRODUCTION

1 This publication contains data for Victoria from a quarterly survey of tourist accommodation establishments. The period covered by the latest survey is the 3 months ended 31 December 1993.

## SCOPE

2 Tourist accommodation establishments currently included in the survey comprise two groups:

- Establishments which provide predominantly short-term accommodation (i.e. for periods of less than 2 months) to the general public. These include:

*Hotels, motels and guest houses, with facilities* being hotels licensed to operate a public bar and motels, private hotels and guest houses all of which provide a bath (or shower) and toilet in most guest rooms and have breakfast available for guests.

**NOTE:** From December quarter 1993, hotel, motel and guest house establishments with fewer than five rooms have been formally excluded from the scope of this statistical collection. This change in scope resulted in the exclusion of 23 establishments which in the September quarter 1993 Survey aggregates for Victoria represented 2.2 per cent of hotel, motel and guest house establishments but accounted for only 0.2 per cent of accommodation capacity and less than 0.1 per cent of occupancy and takings.

*Holiday flats, units and houses* (excluding establishments predominantly operated on a time share basis) which are operated by owners or managers who have sole letting rights to at least five flats, units or houses or by real estate agents for short-term letting. They are mainly self-contained in terms of cooking, bath (or shower) and toilet facilities and do not have breakfast available for guests. Data for holiday flats, units and houses include short-term owner occupation as well as paying guest occupation.

*Visitor hostels* which provide accommodation to visitors on a bed basis (rather than by the room). This category does not include establishments providing charity type accommodation (e.g. Salvation Army hostels) nor hotels, motels and guest houses without in-room facilities which provide accommodation on a per room basis.

- *Caravan parks* which provide either predominantly short-term (i.e. for periods of less than 2 months) or predominantly long-term (i.e. for periods of 2 months or more) accommodation to the general public and which provide powered sites for caravans and toilet, shower and laundry facilities for guests.

3 Data collected and published for each type of establishment (other than holiday flats, units and houses) include both long-term and short-term guests at these establishments.

4 Establishments which provide more than one type of accommodation (e.g. a motel with attached caravan park) are treated as two or more separate establishments. However, self-contained units, flats, cabins, etc. attached to hotels, motels or to caravan parks are included in the capacity for those establishments and not treated as separate holiday flat, unit or house establishments.

## DEFINITIONS

5 *Number of establishments.* For hotels, motels and guest houses, caravan parks and visitor hostels, the number of establishments within the scope of the survey which operated for any part of the survey period, or which closed temporarily for the quarter for seasonal reasons.

6 *Number of letting entities.* For holiday flats, units and houses, the number of owners, managers or real estate agents within the scope of the survey who operated for any part of the survey period.

7 Capacity in terms of *Guest rooms, Bed spaces, Holiday units* or *Caravan park sites, etc.* is the maximum number available to accommodate paying guests during the survey period. Capacity closed temporarily for seasonal reasons is included.

8 *Bed spaces.* Three-quarter beds are counted as one bed space; double beds as two bed spaces. Cots are excluded.

\*\*\*\*\*

EXPLANATORY NOTES *-continued*

\*\*\*\*\*

DEFINITIONS —*continued*

9 *Total caravan park capacity* comprises *On-site vans*, *Other powered sites*, *Unpowered sites* and *Cabins*, etc.

10 *Room nights available*. The number of guest rooms available multiplied by the number of days for which they were available during the survey period. Includes operating periods only for establishments closing (other than for seasonal reasons) or opening during the survey period.

11 Occupancy in terms of *Room nights*, *Unit nights* or *Site nights occupied* refers to the total number of nights each guest room, holiday unit or caravan park site, etc. was occupied during the survey period.

NOTE: From September quarter 1988, caravan park sites, etc. permanently reserved for 2 months or more at the end of the survey period but only casually occupied by their tenants have been recorded continuously as *Site nights occupied* irrespective of whether the tenants of individual sites were in residence on any particular night. (See also paragraph 14 below). Previously, usage of these sites was recorded as *Site nights occupied* only when their tenants were in the park. Total site occupancy rates from September quarter 1988 are therefore not comparable with those from previous quarters.

12 Occupancy in terms of *Guest nights* refers to the total number of nights each paying guest stayed during the survey period.

13 *Sites occupied by long-term guests*. The total number of sites, etc. occupied at the end of the survey period by guests who have stayed continuously for 2 months or more.

14 *Other sites permanently reserved*. The total number of powered and unpowered sites, on-site vans and cabins, etc. continuously let for 2 months or more by the end of the survey period to tenants who occupy the sites only on a casual or sporadic basis. Separate data for this item are available only from September quarter 1992.

15 *Occupancy rates* represent occupancy expressed as a percentage of total capacity available during the survey period - e.g.

$$\text{Room occupancy rate (\%)} \text{ for the period} = \frac{\text{Room nights occupied}}{(\text{Guest rooms}) \times (\text{No. of days in the period})} \times 100$$

providing that, for establishments closing (other than for seasonal reasons) or opening during the period, the denominator of the above expression includes only operating periods.

16 *Guest arrivals*. The total number of paying guests counted only on the first night they stayed at the accommodation establishment.

17 *Unit lettings*. The total number of times a holiday flat, unit or house was occupied by a new tenant, counted only on the first night it was occupied by the new tenant.

18 *Average length of stay* is expressed in number of days and calculated:

- for hotels, motels and guest houses and for visitor hostels, by dividing *Guest nights* by *Guest arrivals* and
- for holiday flats, units and houses, by dividing *Unit nights occupied* by *Unit lettings*.

19 *Takings from accommodation*. Revenue received from the provision of accommodation. Takings from meals are excluded. Takings from accommodation for each month generally represent the takings received during that month. Where payments are received in advance of, or after, the provision of accommodation to guests, the monthly figure for takings from accommodation may not necessarily bear a direct relationship to the number of guests accommodated during the month. Rental and storage fees paid to caravan parks for the keeping of private vans in parks are included in the takings of the month they are received.

\*\*\*\*\*

EXPLANATORY NOTES - *continued*

\*\*\*\*\*

DEFINITIONS *continued*

**20** *Star grading.* The grading of hotels and motels with facilities based on the classification system used by members of the Australian Automobile Association (AAA). The gradings are allocated according to a points system based on the amenities and facilities available to guests. Details of the grading scheme are contained in the RACV-RAASA members' publication *Accommodation Australia*, or the individual tour guides produced by members of the AAA. For the purpose of classifying establishments to a star grading in this publication, 'half' star gradings are ignored (e.g. a two and a half star grading has been shown as two star).

**21** *Employment.* The number of persons working at accommodation establishments at the end of the survey period (including working proprietors and those working on other than accommodation activities).

AUSTRALIAN STANDARD  
GEOGRAPHICAL  
CLASSIFICATION

**22.** Statistics presented in this publication have been classified according to the Australian Standard Geographical Classification (ASGC), Edition 2.3. This classification incorporates a number of hierarchic structures of geographic areas. The appropriate spatial units of the main structure of the ASGC used in this publication are defined as follows.

*Statistical Local Areas (SLAs)* are in most cases either identical with, or have been aggregated to, the previously published whole or part legal Local Government Areas (LGAs) comprising boroughs (B), cities (C), municipalities (M), rural cities (RC), shires (S) and towns (T). In aggregate, SLAs cover the whole of the State without gaps or overlaps. In some cases, legal LGAs overlap Statistical Subdivision boundaries and therefore comprise two SLAs (Part A and Part B).

*Statistical Subdivisions (SSDs).* These consist of one or more SLAs and form the intermediate size spatial unit for the presentation of regional data.

*Statistical Divisions (SDs).* These consist of one or more SSDs. Where SSDs are not shown for statistical purposes, statistical local areas are shown ordered alphabetically within statistical divisions. The Divisions are designed to be relatively homogeneous regions characterised by identifiable social and economic units within the region, under the unifying influence of one or more major towns or cities.

*Statistical Districts.* To provide comparable statistics over a period of time, Statistical Districts have been defined around selected urban centres, with a population of 25,000 or more, experiencing urban growth beyond the legal local government area boundaries. Those districts are intended to contain the anticipated urban spread over the next 20 years.

From 1 January 1991, Victoria was redefined into eleven Statistical Divisions (some of which were re-named), a reduction of one. Because this involved substantial boundary alterations with consequent apparent movement of establishments across Statistical Divisions, great care should be exercised if attempting to compare data published before the change with that published after it.

## UNPUBLISHED STATISTICS

**23** The ABS may make available on request certain unpublished tourist accommodation statistics. A charge may be made for this information.

## RELATED PUBLICATIONS

**24** Publications for Australia, and each State and Territory, are released by the respective offices of the ABS. Tourist accommodation statistics for past quarters are available on request.

**25** Other ABS publications which may be of interest include:

*Directory of Tourism Statistics, 1991* (1130.0) (irregular)

*Overseas Arrivals and Departures, Australia* (3401.0) (monthly)

*Tourist Accommodation, Australia* (8635.0) (quarterly)

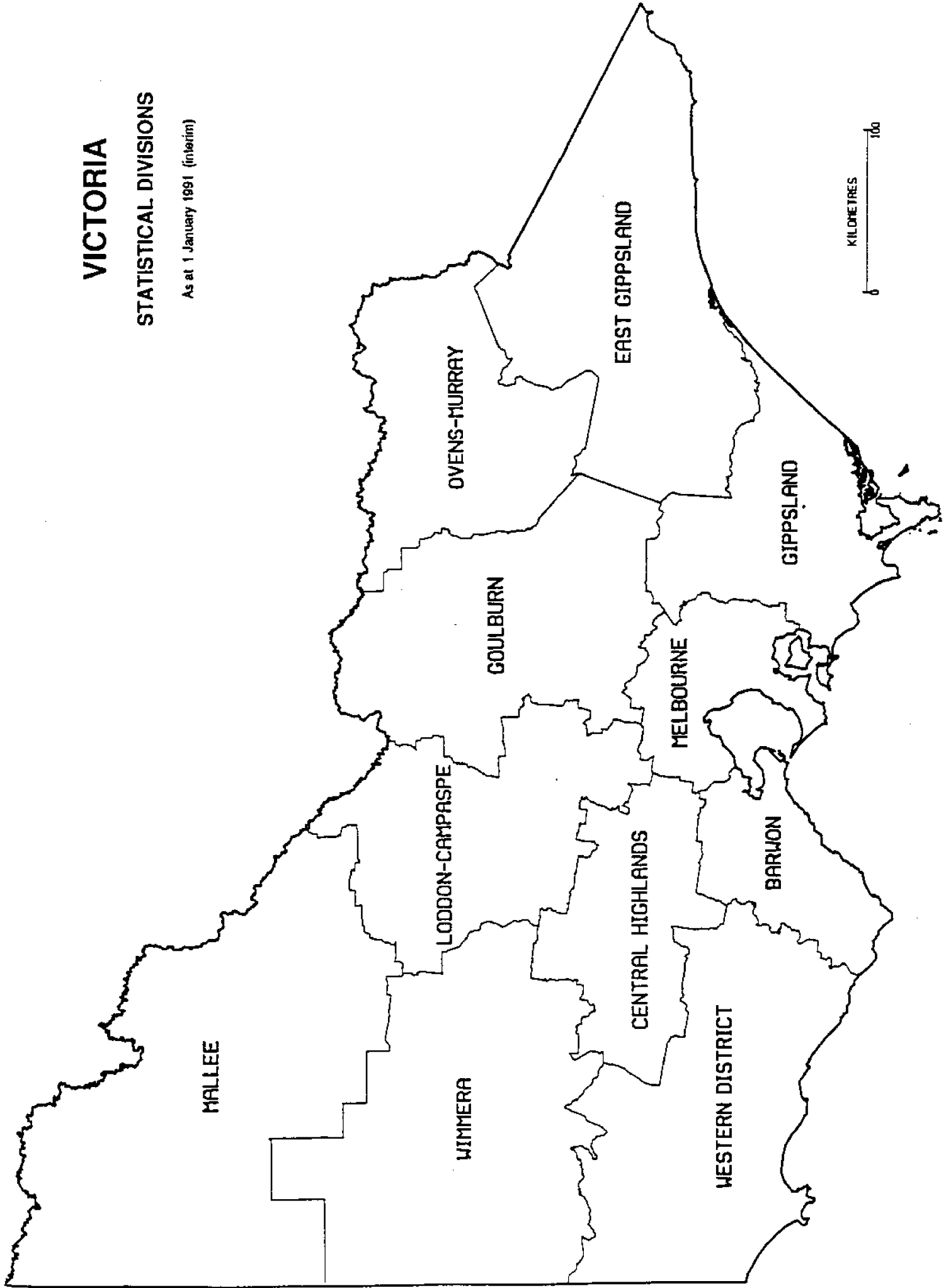
**26** Current publications produced by the ABS are listed in the *Catalogue of Publications and Products* (1101.0). The ABS also issues the *Publications Advice* (1105.0) on Tuesdays and Fridays which lists publications to be released in the next few days. Both the *Catalogue* and *Publications Advice* are available from any ABS office.

\*\*\*\*\*

# VICTORIA

## STATISTICAL DIVISIONS

As at 1 January 1991 (interim)



KILOMETRES 100

**EXPLANATORY NOTES**---continued

\*\*\*\*\*

SYMBOLS AND  
OTHER USAGES

n.a. not available  
 n.p. not available for publication but included in totals where applicable  
 r figure or series revised since previous issue  
 .. not applicable  
 -- nil or rounded to zero  
 (B) Borough  
 (C) City  
 (RC) Rural City  
 (S) Shire  
 (T) Town

27 Where figures have been rounded, discrepancies may occur between totals and the sums of the component items.

ELECTRONIC SERVICES

DISCOVERY Key \*656# for selected current economic, social and demographic statistics.

PC-TELESTATS This service delivers major economic indicator publications ready to download to your computer on the day of release. Phone (06) 252 5408.

PC-AUSSTATS Thousands of up-to-date time series are available on this ABS on-line service. For further information, phone (03) 615 7769.

CDA91 CDA91 is a CD-ROM (COMPACT DISC - READ ONLY MEMORY) product which allows desktop analysis of 1991 Census Data for small areas. CDA91 enables users to select data and geographic areas and view this information as tables, maps or graphs and link this census information with other data.

For further information regarding CDA91, phone (03) 6157769.

RECORDED MESSAGE SERVICES

0055 26400

*Consumer Price Index*  
*National Accounts*  
*Balance of Payments*  
*Labour Force Estimates*  
*Average Weekly Earnings*  
*Estimated Resident Population*

**STUART JACKSON**  
*Deputy Commonwealth Statistician*

\*\*\*\*\*

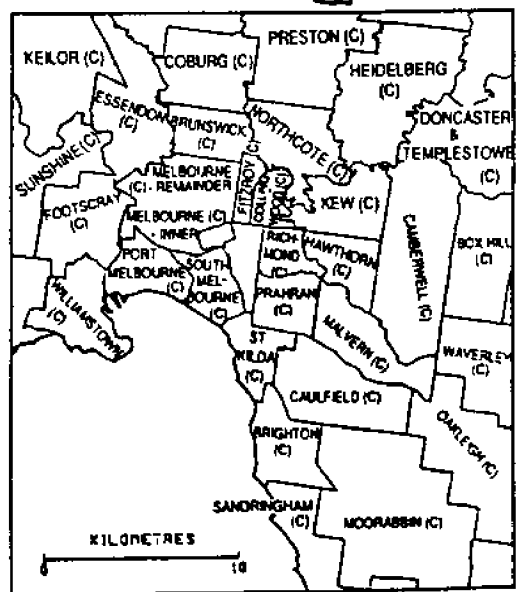


# MELBOURNE STATISTICAL DIVISION

Statistical Local Areas

effective September 1992

City (C) Shire (S)



## *For more information ...*

The ABS publishes a wide range of statistics and other information on Australia's economic and social conditions. Details of what is available in various publications and other products can be found in the *ABS Catalogue of Publications and Products* available at all ABS Offices (see below for contact details).

### **Information Consultancy Service**

Information tailored to special needs of clients can be obtained from the Information Consultancy Service available at ABS Offices (see Information Inquiries below for contact details).

### **National Dial-a-Statistic Line**

0055 86 400

This number gives you 24 hour access, 365 days a year, for a range of statistics.

### **Electronic Data Services**

A wide range of our data is available on electronic media. Selections of the most frequently requested statistics are available, updated daily, on DISCOVERY (Key \*656#). The ABS PC TELESTATS service delivers major economic indicator main features ready to download into personal computers on the day of release. The PC AUSSTATS service enables on-line access to a data base of thousands of up-to-date time series. Selected datasets are also available on diskette or CD-ROM. For more details on electronic data services available, contact Information Services in any of the ABS Offices (see Information Inquiries below for contact details).

### **Bookshops and Subscriptions**

There are over 400 titles of various publications available from ABS Bookshops in all ABS Offices (see below Bookshop Sales for contact details). The ABS also provides a subscription service through which nominated publications are provided by mail on a regular basis at no additional cost (telephone Publications Subscription Service toll free on 008 02 0608 Australia wide).

## *Sales and Inquiries*

<b>Regional Offices</b>		<b>Information Inquiries</b>	<b>Bookshop Sales</b>
SYDNEY	(02)	268 4611	268 4620
MELBOURNE	(03)	615 7000	615 7829
BRISBANE	(07)	222 6351	222 6350
PERTH	(09)	323 5140	323 5307
ADELAIDE	(08)	237 7100	237 7582
HOBART	(002)	205 800	205 800
CANBERRA	(06)	207 0326	207 0326
DARWIN	(089)	432 111	432 111
<b>National Office</b>			
ACT	(06)	252 6007	008 020 608



Information Services, ABS, PO Box 10, Belconnen ACT 2616, or any ABS State office.

